



THE CONNECTED HOME

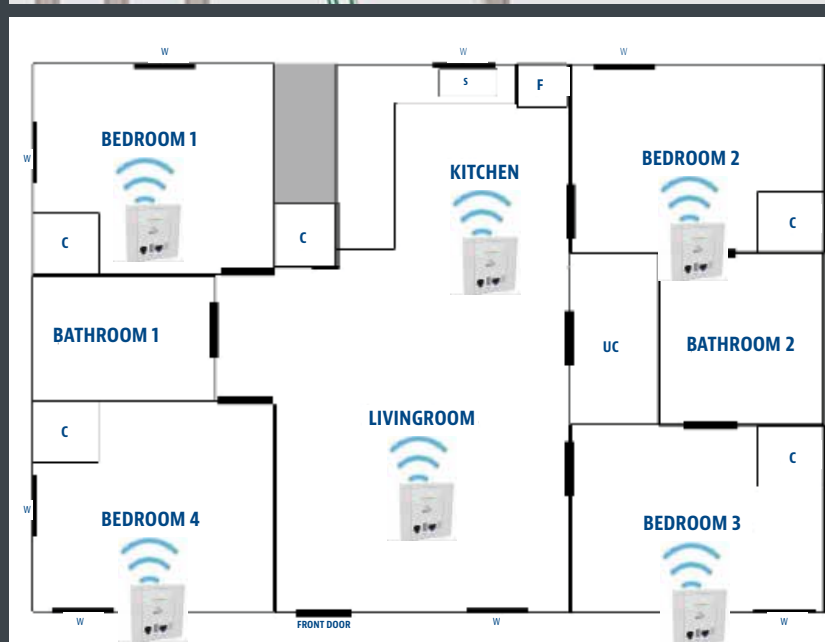
PROVIDING A STABLE, STATE OF THE ART WI-FI & HOME NETWORK SYSTEM CAN HELP DIFFERENTIATE YOU FROM OTHER BUILDERS!

The average builder today provides the basics of home networking with their structured wire programs. But are the basics good enough for today's connected world? In the average home today, there are many network-enabled devices that can make life more convenient and beneficial if they are available online. From security and child monitoring to thermostats, pools and jacuzzis to home entertainment systems and consistent Internet access.

Imagine if the new homeowners of the homes that you build could walk around anywhere in their house with their laptops or tablets and never have to worry about losing connection. Providing a stable, state of the art Wi-Fi and home network system can help differentiate you from other builders. With the Niveo, the solutions is simple. With just a few parts that fit right into current structured wire programs, WESCO can help make this a reality. Innovative features include an RJ45 jacket for deployment of IP-TV, IP-Phone or IP Cams, as well as an RJ11 socket for conventional telephone systems. In addition, the NWA200 provides a 5V 500mA USB charger output port, and the unit is powered fully with PoE (Power over Ethernet, injector included), avoiding the need for power cabling throughout the house.

The NWA200 is designed with the end-user in mind. The unit features a compact design, including a snap-on cover plate. An optional bracket from Liberty AV Solutions (LIBER-CQ87890-1) secures the NWA200 in a standard double gang box. Custom brackets are available in virtually any color or finish.

CONTACT WESCO TO HELP YOU DESIGN THE RIGHT SOLUTION FOR YOUR CUSTOMERS!



WESCO has a wide variety of network appliances for the home. WESCO carries cameras for any and all applications as well as switches, access points and firewalls.

RUN WITH US AS WESCO HELPS CONNECT YOUR CUSTOMERS WITH THEIR HOMES!

THE CONNECTED HOME

Differentiating your homes from the other builders!

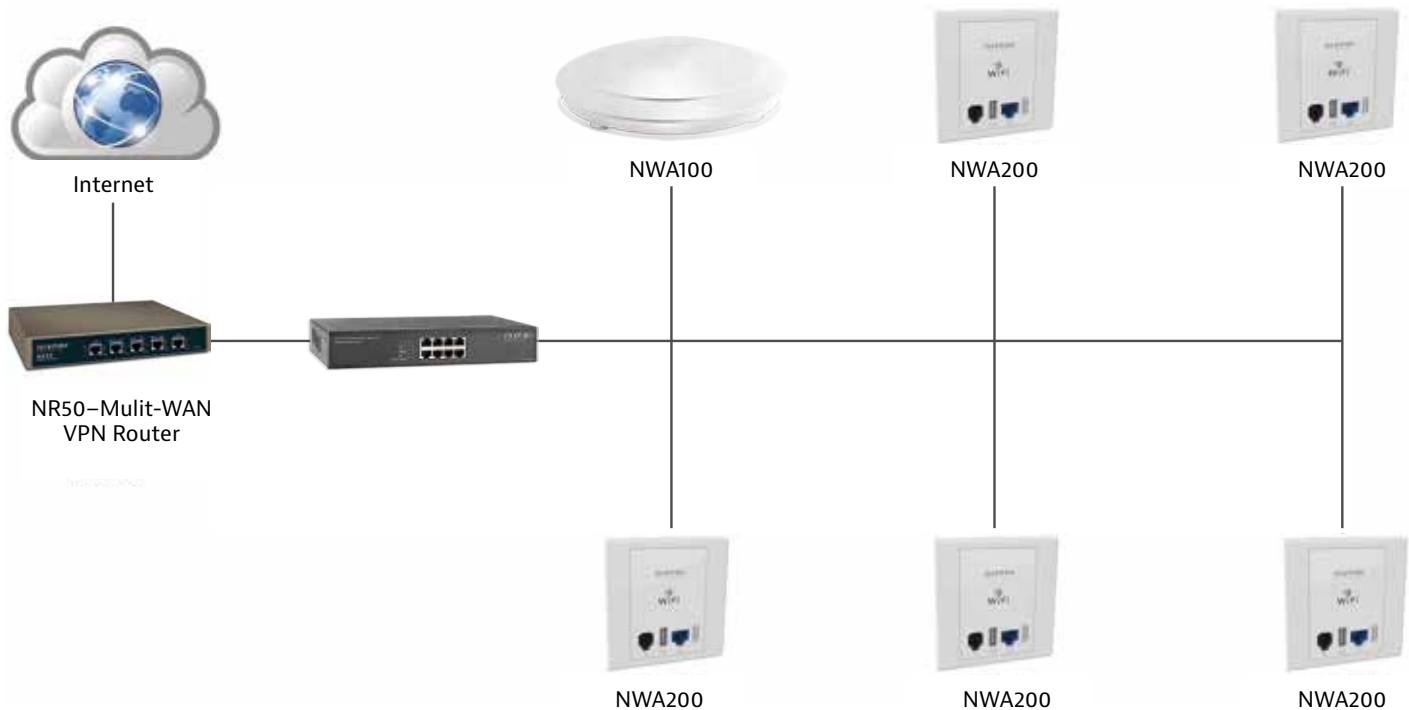


LIBERTY
AV SOLUTIONS

A SUBSIDIARY OF WESCO DISTRIBUTION, INC.

RUN WITH US

THE CONNECTED HOME



TECH SPECS

NWA200 300N INWALL FAT WIRELESS POE ACCESS POINT

INTERFACES

2 * FE LAN PORTS; 1 * RJ11 TELEPHONE JACKET 1 * USBV2.0

WI-FI ANTENNAS

2*3dbi Omni-directional antennas

POWER

802.3af PoE. Max power 9W

FREQUENCY

2.4Ghz - 2.483 Ghz

MAXIMUM TRANSIT POWER

18dbm

WIRELESS BASIC SETTINGS

Multiple SSID

Enable / Disable Wireless Radio Wireless Client Isolation Wireless Access

Control Wireless Client list

SSID-to VLAN Tagging

WIRELESS SECURITY SETTINGS

64/128 WEP, WPA-PSK, WPA2-PSK, WPA, WPA2, WPA & WPA2-PSK

MAXIMUM CONCURRENT CLIENTS

12

LAN SETTINGS

Static IP/ Dynamic IP

DHCP SERVER

DHCP Server, Client list

VPN PASS-THROUGH

PPTP, L2TP

OPERATING TEMPERATURE

-10°C ~45°C

OPERATING HUMIDITY

10%-90% non-condensing

CERTIFICATIONS

FCC, CE, Rohs, GOS-R