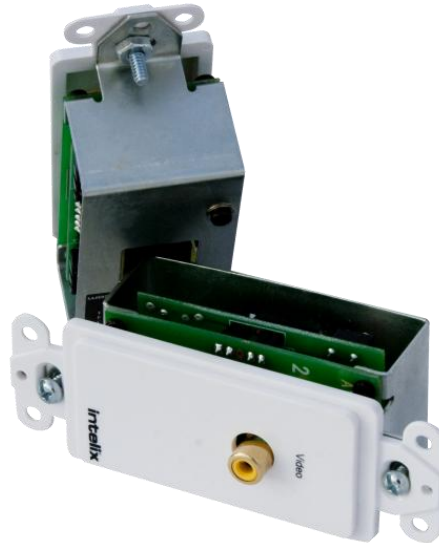


AVO-V1-WP-F Technical Specification

One Channel Composite Video Twisted Pair Wall Plate Extender

Rev. 130114

The Intelix AVO-V1-WP-F wall plate balun transmits one composite video signal over standard structured cabling, such as Cat 5e. Used in pairs or with a modular Intelix AVO-V1-F balun, AVO-V1-WP-F baluns replace bulky coaxial video cable and transmit a video signal up to 2,200 feet.



Technical Specifications

I/O Connections	
Video	One (1) RCA
Twisted Pair	One (1) 8P8C port (RJ45)
Supported Video	
Maximum Distance via Cat 5e	2200 ft.
RJ45 Pin Configuration	Pins 7 and 8: Video 1
Video Bandwidth	DC to 8 MHz
Impedance	75 ohms
Maximum Input Level	1.1 Vp-p
Insertion Loss	Less than 2 dB
Return Loss	Greater than 15 dB
Common Mode Rejection	Greater than 40 dB
Chassis and Environmental	
Enclosure	Galvanized Steel
Dimensions	102 mm x 36 mm x 43 mm (4 in. x 1.4 in. x 1.7 in.)
Shipping Weight	0.19 kg (0.41 lbs)
Operating Temperature (Environment)	0° to +40° C (+32° to +104° F)
Operating Humidity (Environment)	20% to 90%, Non-condensing
Storage Temperature (Environment)	-10° to +60° C (+14° to +140° F)
Other	
Regulatory	RoHS
Standard Warranty	2 Years
Included Accessories	Installation Guide
Compatible Products	AVO-V1-PAIR-F

Distances and picture quality may be affected by cable grade, cable quality, source and destination equipment, RF and electrical interference, and cable patches. Intelix specifications are based on straight-through cabling with standard-grade Cat 5e unless noted otherwise.