



BMP®21-LAB Printer (\$99)

Basic labels on continuous supply for Laboratory ID including vials, tubes, slides, plates, bottles and labels for lab equipment, storage shelves, drawers, bins, cryo, deep freezer and autoclave labels. 0.75 in. max width.



BMP®21-PLUS Printer (\$99)

Basic labels on continuous supply for wires and cables, panels, datacomm, as well as misc. industrial labels in operations, maintenance and production areas. 0.75 in. max width.



BMP®41 Label Printer (\$299)

Labels with more advanced text and formatting on die-cut and continuous supplies for wires and cables, electrical and automation panels and datacomm, as well as misc. industrial labels in operations, maintenance and production areas. 1 in. max width.



BMP®51 Label Printer (\$430)

Labels with more advanced text and formatting on die-cut and continuous supplies for wires and cables, electrical and automation panels and datacomm, as well as misc. industrial labels in operations, maintenance and production areas. 1.5 in. max width.



BradyPrinter M611 Label Printer (\$675)

Higher volumes of labels with more advanced text and formatting on die-cut and continuous supplies for wire and cable, electrical and automation panels, datacomm and general ID. Runs on external Brady Workstation mobile or desktop software. Features a color touchscreen with material monitoring, Wi-Fi and Bluetooth connectivity, USB 2.0 port. 2 in. max width.



BMP®61 Label Printer (\$725 / \$775)

Higher volumes of labels with more advanced text and formatting on die-cut and continuous supplies for wire and cable, electrical and automation panels, datacomm and general ID. Features a color touch screen, QWERTY keyboard, USB connectivity, optional Wi-Fi, list management. 2 in. max width.



BMP®71 Label Printer (\$895)

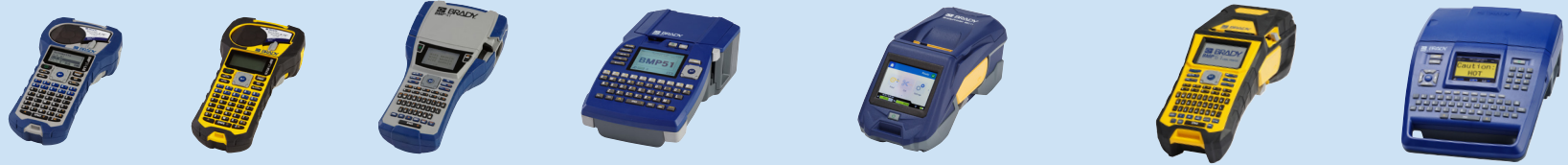
Higher volumes of labels with more advanced text and formatting on die-cut and continuous supplies for wires and cables, electrical and automation panels and datacomm, as well as misc. industrial labels in operations, maintenance and production areas. 2 in. max width.

Printer Specifications

Print speed	0.40 in./sec.	0.40 in./sec.	1.30 in./sec.	1.18 in./sec. (w/AC adapter)	1.33 in./sec.	1.33 in./sec.	1.5 in./sec.
Print and color capabilities	Thermal transfer monochrome	Thermal transfer monochrome	Thermal transfer monochrome	Thermal transfer monochrome	Thermal transfer monochrome	Thermal transfer monochrome	Thermal transfer monochrome
Print resolution	203 dpi	203 dpi	300 dpi	300 dpi	300 dpi	300 dpi	300 dpi
PC compatibility or stand alone	Stand alone	Stand alone	Stand alone and PC connect	Stand alone and PC connect	PC and mobile connect	Stand alone and PC connect	Stand alone and PC connect
Connectivity options	none	none	USB	USB/Wi-Fi (field installable)	Bluetooth/Wi-Fi/USB 2.0	USB/Wi-Fi/Wi-Fi direct (factory installed)	USB
Software compatibility	none	none	Brady Workstation, LabelMark™ Software	Brady Workstation, LabelMark™, Brady Mobile Apps	Required: Brady Workstation Express Labels Mobile App (IOS/Android) or Brady Workstation Desktop Software	Brady Workstation, Labelmark™ (6.0 or higher) Brady Mobile Apps	Brady Workstation, LabelMark™ Software
Power supply options	Li-Ion rechargeable battery, 6AA, AC adapter	Li-Ion rechargeable battery, 6AA, AC adapter	NiMH rechargeable battery, AC adapter	Li-Ion rechargeable battery, 8AA, AC adapter	Internal Li-Ion rechargeable battery, AC power/battery charger	Rechargeable NiMH battery, AC Power/battery charger	NiMH battery, AC adapter
Standard warranty	2 years	2 years	2 years	2 years	2 years	2 years	2 years
Dimensions (w x h x d)	4.5 in. x 9.5 in. x 2.5 in.	4.5 in. x 9.5 in. x 2.5 in.	6 in. x 11.5 in. x 3.6 in.	6 in. x 10.3 in. x 3.6 in.	4.45 in. x 4.55 in. x 10.97 in.	12.93 in. x 4.22 in. x 4.19 in.	9.5 in. x 13.0 in. x 4.6 in.
Weight	1.04 lbs (without tape, batteries)	1.04 lbs (without tape, batteries)	2.1 lbs (without tape, batteries)	2.6 lbs (without tape, batteries)	3.52 lbs (with supplied media and ribbon)	2.46 lbs (without tape, batteries)	4.9 lbs (without tape, batteries)

Print Features

Screen size	3 lines x 14 characters	3 lines x 14 characters	13 lines x 36 characters	13 lines x 36 characters	Custom LCD, color, 3.5 in. QVGA	LCD, color, 2.8 in. QVGA	LCD, color, 3.5 in. QVGA
Back lit screen	Yes	Yes	Yes	Yes	Yes	Yes	Yes
Keyboard style	ABC	ABC	QWERTY	QWERTY	Peripheral only, no keyboard	QWERTY	QWERTY
Cutter type	Manual cutter	Manual cutter	Manual cutter	Manual cutter	Auto cutter	Manual cutter	Manual cutter
Max print width	0.75 in.	0.75 in.	1.0 in.	1.5 in.	1.92 in.	1.92 in.	1.92 in.
Font types available	1	1	2	14	Driven by software	2	2
Font sizes (points)	Auto, 6, 9, 14, 20, 28, 40	Auto, 6, 9, 14, 20, 28, 40	Custom, Auto, 4, 6, 7, 9, 10, 13, 14, 16, 20, 26, 28, 32, 38, 40, 42, 45, 51, 55, 60, 65	Custom, Auto, 4, 6, 7, 9, 10, 13, 14, 16, 20, 26, 28, 32, 38, 40, 42, 45, 51, 55, 60, 65, 70, 76, 102	Driven by software	4 through 174, autosizing	4 through 174, autosizing
Multi-line capabilities	4	4	25	32	Driven by software	25	25
Label print rotation	Yes	Yes	Yes	Yes	Driven by software	Yes	Yes



BMP®21-LAB Printer (\$99)

BMP®21-PLUS Printer (\$99)

BMP®41 Label Printer (\$299)

BMP®51 Label Printer (\$430)

BradyPrinter M611 Label Printer (\$675)

BMP®61 Label Printer (\$725 / \$775)

BMP®71 Label Printer (\$895)

Print Features (cont.)

Data serialization	Alphanumeric	Alphanumeric	Yes, multiple and linked	Yes, multiple and linked	Driven by software	Yes, multiple and linked	Yes, multiple and linked
Barcode types	Code 39, Code 128	Code 39, Code 128	Code 39, Code 128 and more using LabelMark™ software	Code 39, Code 128 and more using LabelMark™ software	Driven by software	Code 39, Code 128 and more using LabelMark™ software	Code 39, Code 128 and more using LabelMark™ software
Memory capacity	10 files up to 2MB	10 files up to 2MB	25,000 characters up to 48 MB	25,000 characters up to 48 MB	512 MB RAM / 256 MB Flash	512 MB RAM / 256 MB Flash	200 MB
Data transfer from PC to printer	No	No	Yes	Yes	Driven by software	Yes	Yes
Print preview	No	No	Yes	Yes	Driven by software	Yes	Yes
Symbols available	51	104	450	450	Driven by software	450	500+

Label Supply Characteristics

Label and ribbon supplies	Cartridge	Cartridge	Cartridge	Cartridge	Label and ribbon in separate cartridges	Label and ribbon in separate cartridges	Label and ribbon in separate cartridges
Material formats supported	Continuous tape only	Continuous tape only	Continuous and die-cut labels	Continuous and die-cut labels	Continuous, die-cut and custom labels	Continuous, die-cut and custom labels	Continuous, die-cut and custom labels
Media width	0.25 to 0.75 in.	0.25 to 0.75 in.	0.25 to 1.0 in.	0.25 to 1.5 in.	0.235 to 2.00 in.	0.235 to 2.00 in.	0.235 to 2.00 in.
Types of materials	10-year outdoor vinyl, cryo polyester, slide and staining polyester, nylon cloth labels, self-laminating, straw id, standard polyester	10-year outdoor vinyl, nylon cloth wire ID, heat shrink wire ID, self-laminating wire ID, standard polyester, chemical resistant polyester	10-year outdoor vinyl, nylon cloth wire ID, heat shrink wire ID, self-laminating wire ID, removable cloth wire ID, standard polyester, aggressive adhesive polyester (2), metallized polyester, non-adhesive tag, outdoor reflective	10-year outdoor vinyl, nylon cloth wire ID, heat shrink wire ID, self-laminating wire ID, removable cloth wire ID, datacomm cable tags (3), standard polyester, aggressive adhesive polyester, metallized polyester, non-adhesive tag, outdoor reflective	General purpose industrial vinyl, heat shrink wire ID, self-laminating wire ID, removable cloth wire ID, datacomm cable tags (3), standard polyester (4), aggressive adhesive polyester (2), metallized polyester (3), non-adhesive tag, polyimide/electronics materials (6), tamper resistant materials (6), raised panel labels	General purpose industrial vinyl, heat shrink wire ID, self-laminating wire ID, removable cloth wire ID, datacomm cable tags (3), standard polyester (4), aggressive adhesive polyester (2), metallized polyester (3), non-adhesive tag, polyimide/electronics materials (6), tamper resistant materials (6), raised panel labels (engraved plate alternative)	10-year outdoor vinyl, nylon cloth wire ID, heat shrink wire ID, self-laminating wire ID, removable cloth wire ID, self-extinguishing wire ID, datacomm cable tags (3), standard polyester (4), aggressive adhesive polyester (2), metallized polyester (3), non-adhesive tag, polyimide/electronics materials (6), tamper resistant materials (6), outdoor reflective, glow-in-the-dark, ToughStripe® floor tape, ToughWash® (2), repositionable vinyl, raised panel labels (engraved plate alternative)
Quantity of label parts available	62	70+	100+	200+	600+	600+	300+ and customs
Cartridge series	M21- series, IDPal and LabPal series	M21- series, IDPal and LabPal series	M-series (except parts over 1 in. wide)	M-series	BPTL, BPTDS, BPSPT, BPTLTB, PTL, PSHT, PTLEP, PTS, PTLFP, PSPT, PTPSL, PSFR, PTPS, PTLSSL, BM71, BM61, M61, M61C, custom available	BPTL, BPTDS, BPSPT, BPTLTB, PTL, PSHT, PTLEP, PTS, PTLFP, PSPT, PTPSL, PSFR, PTPS, PTLSSL, BM71, BM61, M61, M61C, custom available	M71 series, PTL series with adapter BM71, MBulk, (TLS2200 labels but not TLS ribbons)
Ribbon series	Included in cartridge	Included in cartridge	Included in cartridge	Included in cartridge	M61-RXX10 (ex: M61-R4310)	M61-RXX10 (ex: M61-R4310)	M71-RXX00 (ex: M71-R4300)

Learn more at secure.libertycable.com or contact your local Liberty AV Rep!

