



Buyers Guide



Innovative Solutions for Tomorrow's Companies



Innovation Collaboration Support

Clear Touch® is a forward-thinking business technology provider consistently recognized as one of the fastest-growing companies in the United States. We provide ongoing commitment to our customers, reliable products, and industry-leading innovations that pave the way for continued growth.

Comprehensive Service & Support

We don't ship our support services overseas or install our products and walk away. Instead, we provide comprehensive customer support for the life of our products through our regional partners and in-house personnel. Our dedicated team supports our customers through installation, training, and beyond.

U.S. Owned & Operated

We're 100% American owned and operated, and we take immense pride in the quality and reliability of our products and service.

Customer-Focused Programs

We offer convenient financing options through our Clear Touch Capital™ program as well as ongoing, self-paced professional development and technical support through Clear Touch Academy™.

Flexible Warranty Options

Our long-term (1, 3, and 5-year) warranties give your company more confidence in our panels.



Pictured solution:
6075K Interactive Panel with
Chorus Collaboration Suite



6000K



THE CLEAR TOUCH® DIFFERENCE

What Sets the 6000K Series Apart

The best business technology allows coworkers to customize their experience, collaborate intuitively, and create flexible work environments.

Maximize ROI and cost-effectiveness by investing in multi-purpose products that are able to grow and adapt as your needs change.

We develop innovative products and solutions that set us apart from our competitors and empower learning.

Walk-Up Ready, Intuitive User Experience

Clear Touch® panels are so easy to use. Just turn the panel on and start exploring the intuitive Android interface.

Smart, Multi-Touch Technology

20 points of simultaneous touch on a cool, responsive, smooth-glide surface that's highly accurate without calibration.

Simple, Streamlined Connection to Multiple Devices

Multiple USB ports, HDMI inputs and output, and wireless connectivity make set-up extremely simple.

Blazing Fast Response Times

The 6000K features the fastest HiSilicon panel processor on the market, allowing for faster response times and providing for faster streaming and instantaneous casting.

Easy to Customize to Your Work Environment

Clear Touch® accessories create complete flexibility. Choose accessories that fit your workplace needs—easily adjust height on a stand, or add an optional PC or WiFi Module.

Our Software or Yours

No annual software licenses or cloud-based storage subscriptions with our bundled software. Our panels are also software agnostic, which means you can use any program you like.

Tested, Dependable Technology

Our displays go through rigorous safety and reliability testing. The 6000K is certified by Underwriters Laboratories.

CERTIFIED BY
UNDERWRITERS
LABORATORIES

The 6000K Series features a
HISILICON V811 CHIP SET,
making it the market's
FASTEST PANEL PROCESSOR.

6000K Series

WITH INFRARED RECOGNITION

Panel Operating System

System Version Android 8.0
CPU Dual Core A73
..... Dual Core A53
GPU Quad Core Mali G51
RAM 3GB
ROM 16GB

Panel Interactivity

Sensing Type Infrared recognition
Compatibility Windows, Android,
..... MacOSX, Linux, Chrome
Touch Point 10 points writing
..... 20 points touch
Minimum Object Size 3mm
Touch Tool Finger
..... Passive infrared pen
Response Time <10 ms
Accuracy 1.5 mm (over 90% Area)
Communication Mode Full-speed USB (driver free)
Interface USB
Surface Hardness 7 mohs toughened glass
Output Coordinate 32767 x 32767

Panel Ambient

Operation Temperature 32°F – 104°F
Operation Humidity 10% – 90%
Storage Temperature -4°F – 140°F
Storage Humidity 10% – 90%
Altitude Below 16404.2'

Included Accessories

2 pens, remote control, 2 AAA batteries,
power cord, HDMI cable, USB touch cable

OPTIONAL WIFI MODULE

OPTIONAL PC MODULE

- 6 USB 3.0 Ports
- 1 LAN (RJ45)
- 1 VGA Output
- 1 Earphone Output
- 1 Microphone Input
- 1 Display Port Output
- 1 HDMI Output

RIGHT SIDE

- 1 HDMI Output
- 3 USB 3.0 Port
- 1 USB 2.0 Port
- 2 Touch Inputs
- 1 HDMI 2.0 Input
- 2 HDMI 1.4 Inputs

FRONT

- 2 USB 2.0 Ports

BOTTOM

- 1 VGA Input
- 1 Audio Input
- 1 SPDIF
- 1 RS232
- 1 Audio Out
- 1 RJ45



		6065K ULTRA HD	6075K ULTRA HD	6086K ULTRA HD
Panel Display				
Size		65"	75"	86"
Screen Type	LED	●	●	●
Aspect Ratio	16:9	●	●	●
Resolution	3840H x 2160V Ultra HD	●	●	●
Display Area		56.24" x 31.63"	64.95" x 36.53"	74.61" x 41.97"
Pixel Pitch		.372mm x .372mm	.430mm x .430mm	.494mm x .494mm
Back Light Unit	Direct type LED	●	●	●
Response Time		8 ms	6 ms	8 ms
Refreshing Frequency	60Hz	●	●	●
Display Color	1.07B (10bit)	●	●	●
Brightness	350 cd/m ²	●	●	●
Contrast Ratio		1200:1	1100:1	1200:1
Viewing Angle	178°	●	●	●
Life Time	30,000 hours	●	●	●
Panel Audio				
Speaker Type	Built-in speaker	●	●	●
Output Power	12W x 2	●	●	●
Panel Connectors				
HDMI Output 2.0		●	●	●
USB 2.0		3	3	3
USB 3.0		3	3	3
Touch Input		2	2	2
HDMI Input 2.0		3	3	3
VGA Input		●	●	●
Audio Input		●	●	●
Audio Output		●	●	●
RS232 Port		●	●	●
RJ45 Port		●	●	●
SPDIF		●	●	●
Power				
Power Requirements	100-240V~ 50/60Hz	●	●	●
Standby Power	≤0.5W	●	●	●
Overall Power (nominal)		350W	350W	550W
Physical Specification				
Key Location		Front	Front	Front
Dimension	L x W x D	58.62" x 35.32" x 3.39"	67.32" x 40.16" x 3.39"	77.09" x 45.67" x 3.39"
Package Dimension	L x W x D	65.20" x 8.03" x 41.34"	73.23" x 11.02" x 46.06"	87.05" x 11.02" x 53.94"
Net Weight		82.34 lbs	107.37 lbs	142.53 lbs
Gross Weight		102.29 lbs	141.43 lbs	190.48 lbs
Machine + Wall Mount Thickness (CTI-MOUNT-FIXW)		5.20"	5.20"	5.20"
Wall-hanging Screw Spec	M8 x 25 mm	●	●	●
VESA		600 x 400 mm	800 x 400 mm	600 x 800 mm



7000X

55" & 65"
AVAILABLE



THE CLEAR TOUCH® DIFFERENCE

What Sets the 7000X Series Apart

Clear Touch® displays are powerful collaboration tools that support staff presentations, video conferencing, sales presentations, ideation sessions and much more—easily transitioning between various roles in the workplace.

When combined with an easy-to-manuever mobile stand, Clear Touch® panels effortlessly move between various departments, board rooms, and huddle spaces to accommodate everyone's needs.

Brilliant, Multi-Touch Display

Enjoy 20 points of simultaneous touch on a low-friction glass surface. The capacitive touch display allows for sleek, flat edges and faster response times.

Pressure Sensitivity

The multi-touch surface has the ability to detect pressure differences, reacting with thicker or thinner lines.

Intuitive, Walk-Up Ready Interface

Simply turn on the panel and start interacting with the intuitive Android interface. Clear Touch® panels provide an effortless user experience.

Easy Connectivity, Device Agnostic

Users can connect to different devices at the same time, even in a mixed environment. Our panels feature multiple USB ports, HDMI inputs, HDMI output and wireless connectivity.

Versatile and Customizable

Choose the right accessories to tailor your solution to your work environment. Clear Touch® stands and wall mounts allow you to easily adjust the height of your panel—or even move it between departments. Our optional PC Modules and WiFi Modules enhance your processing power.

Works With Any Software

Our integrated software suite doesn't require any annual licenses or cloud-based storage subscriptions. Use our innovative solutions and all your favorite business applications on our software agnostic panels.

Durable, Reliable Technology

Clear Touch® panels have an industry-leading DOA rate under 1%. All our 7000X series displays are certified by the TÜV SÜD.

7000X Series

WITH CAPACITIVE RECOGNITION

Panel Operating System

System VersionAndroid 7.0
 CPUA73x2
 GPUMali 450x5
 RAM2GB
 ROM16GB

Panel Interactivity

Sensing TypeCapacitive recognition
 CompatibilityWindows, MacOSX,
 Android, Linux, Chrome
 Touch Point10 points writing
 20 points touch
 Touch ToolFinger
 Capacitive stylus
 Response Time<30 ms
 Accuracy1 mm
 Touch RecognitionPalm Rejection
 Simultaneous multiple colors
 Simultaneous multiple pens
 Pressure sensitivity
 Surface Hardness7 mohs toughened glass
 Output Coordinate32767 x 32767

Panel Ambient

Operation Temperature 32°F – 104°F
 Operation Humidity10% – 90%
 Storage Temperature-4°F – 140°F
 Storage Humidity10% – 90%
 AltitudeBelow 16404.2'

Included Accessories

2 pens, remote control, 2 AAA batteries,
 power cord, HDMI cable, USB touch cable

CERTIFIED
BY TÜV SÜD

OPTIONAL
WIFI MODULE

OPTIONAL
PC MODULE

- 6 USB 3.0 Ports
- 1 LAN (RJ45)
- 1 VGA Output
- 1 Earphone Output
- 1 Microphone Input
- 1 Display Port Output
- 1 HDMI Output

RIGHT SIDE

- 1 USB 3.0 Port
- 3 USB 2.0 Port
- 2 Touch Inputs
- 1 VGA Input
- 1 Audio Input
- 2 HDMI Input
- 1 HDMI Output

BOTTOM

- 1 USB 2.0 Port
- 1 AV Input
- 1 Audio Output
- 1 SPDIF
- 1 RS232 Port
- 1 RJ45 Port

FRONT



7055X
ULTRA HD

7065X
ULTRA HD

		7055X ULTRA HD	7065X ULTRA HD
Display			
Size		55"	65"
Panel Type	IPS	●	●
Aspect Ratio	16:9	●	●
Resolution	3840 x 2160 Ultra HD	●	●
Display Area		47.62" x 26.79"	56.24" x 31.63"
Pixel Pitch		.315mm x .315mm	.372mm x .372mm
Back Light Unit	Direct type LED	●	●
Response Time		6 ms	9 ms
Refreshing Frequency	60Hz	●	●
Display Color	1.07B (10bit)	●	●
Brightness	350 cd/m ²	●	●
Contrast Ratio	1200:1	●	●
Viewing Angle	178°	●	●
Life Time	30,000 hours	●	●
Audio			
Speaker Type	Built-in speaker	●	●
Output Power	10W + 15W x 2	●	●
Connectors			
USB 2.0		4	4
USB 3.0		●	●
Touch Input		2	2
HDMI Input 2.0		2	2
VGA Input		●	●
Audio Input		●	●
AV Input		●	●
HDMI Output 2.0		●	●
Audio Output		●	●
RS232 Port		●	●
RJ45 Port		●	●
SPDIF		●	●
Power			
Power Requirements	100-240V [~] 50/60Hz	●	●
Standby Power	≤0.5W	●	●
Overall Power (nominal)		250W	300W
Physical Specifications			
Key Location	Right side	●	●
Dimension	L x W x D	49.96" x 29.41" x 3.43"	58.78" x 34.33" x 3.46"
Package Dimension	L x W x D	56.22" x 8.66" x 33.27"	66.8" x 8.66" x 40.9"
Net Weight		63.93 lbs	98.44 lbs
Gross Weight		89.51 lbs	131.09 lbs
Machine + Wall Mount Thickness (CTI-MOUNT-FIXW)		5.24"	5.28"
Wall-hanging Screw Spec	M8 x 25 mm	●	●
VESA		400 x 200 mm	600 x 400 mm

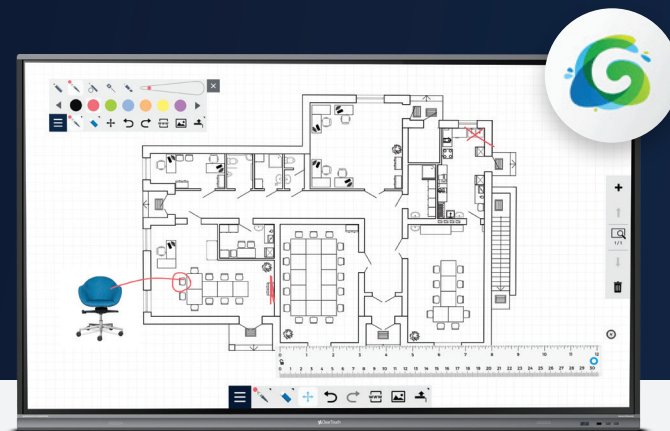
Optional PC Module

Optional WiFi Module

RIGHT SIDE

Software

BRILLIANT INTERACTIVE PANELS +
A POWERFUL SOFTWARE SUITE =
INFINITE POSSIBILITIES



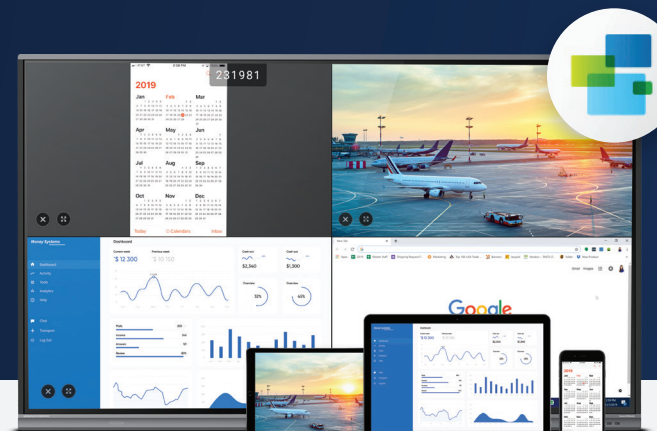
You have thousands of innovative ideas for bringing your content to life—and you need technology that can keep up with your creativity. Our integrated software suite gives you all the tools you'll ever need, right at your fingertips.

Canvas

Infinite Canvas, Infinite Possibilities

Clear Touch Canvas™ gives you an infinite whiteboard that allows you to open all media types directly from the panel or open unlimited browsers inside your presentations to explore deeper. No more need to hyperlink, save bookmarks, or jump out of your presentation into multiple third-party applications, losing your audience along the way. You can even incorporate YouTube videos but avoid unwanted video ads, comments, and links to related videos.

- Unlimited whiteboard space to annotate and write
- Ability to save files to the cloud or email
- Open unlimited live browsers or videos without leaving Canvas
- Built in ideation tools

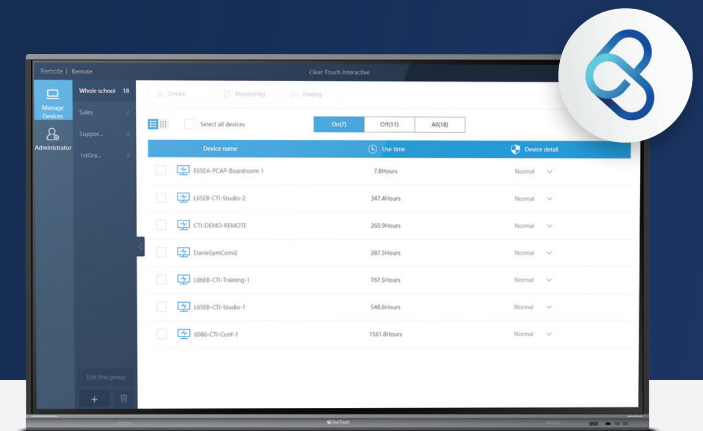


Collage

Simple, Effortless Collaboration

Clear Touch Collage™ makes it simpler than ever to get the whole team involved by allowing users to connect up to four devices simultaneously and project content wirelessly. Simply enable Collage on your touchscreen panel, enter the displayed access code, and you're ready to go.

- Enable up to 64 devices to connect and share up to 4 devices to the panel simultaneously
- Permission control to allow or restrict devices from sharing
- Compatible with iPads, Chromebooks, Macs, PCs, and Android devices
- Code or QR verification protected so only members in the room can join



Command

Manage Technology in the Connected Workplace

Clear Touch Command™ gives IT departments and managers the ability to remotely troubleshoot their touchscreen panels, automatically deploy updates, monitor device usage statistics, and communicate announcements and messages across an entire corporation. With Command, your IT team can see and update all panels remotely from a centralized computer instead of disrupting the workday by servicing individual panels.

- Automatic event scheduling including power controls
- Built in text messaging capabilities to individual or site-wide panels
- Comprehensive panel usage statistics and monitoring
- Remotely troubleshoot and conduct updates



Canvas, Collage and Command are integrated with Clear Touch® panels. To learn more about our software programs visit getcleartouch.com.

Accessories



Chorus

Collaboration in Harmony

Chorus is the simple, all-in-one business solution that transforms your Clear Touch® interactive panel into a powerful hub for collaboration. Chorus consolidates all the variables that can make teamwork feel tedious and helps them work in harmony. No paper notes, whiteboards, or flip charts.

Chorus is available for a separate, affordable licensing fee and does not come bundled with the panels.

Pull up an infinite whiteboard for ideation sessions, streamline your project management workflows, connect to your favorite conferencing tool, open and navigate in multiple browsers; clearly show Sprint results, stream content to the interactive panel from multiple devices at once, interact with other panels with Chorus across the enterprise—all without ever leaving the shared workspace.

PC Modules

Enhance the Power of Your Panel

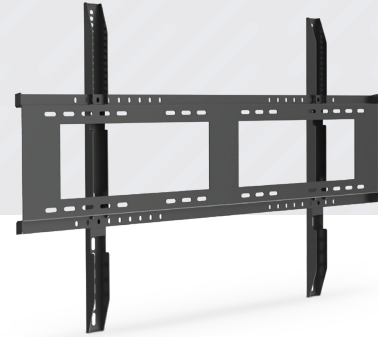
We offer five PC models that can boost your speed and storage—and make it simpler to share panels among your team. Find the right model for your needs.



Standard	Premium	Enterprise	Premium	Enterprise
INTEL® CORE™ i5	INTEL® CORE™ i5	INTEL® CORE™ i5vPro	INTEL® CORE™ i7	INTEL® CORE™ i7vPro
CTI-PCMOD-PC45-ST	CTI-PCMOD-PC45-IG	CTI-PCMOD-PC45-VP	CTI-PCMOD-PC47-IG	CTI-PCMOD-PC47-VP
Intel® H310 Chipset	Intel® H310 Chipset	Intel® Q370 Chipset	Intel® H310 Chipset	Intel® Q370 Chipset
Intel® Core™ i5 8400 CPU	Intel® Core™ i5 8400 CPU	Intel® Core™ i5 8400 CPU	Intel® Core™ i7 8700 CPU	Intel® Core™ i7 8700 CPU
8GB DDR4 Memory	8GB DDR4 Memory	8GB DDR4 Memory	16GB DDR4 Memory	16GB DDR4 Memory
128GB SDD Storage	128GB SDD Storage	128GB SDD Storage	256GB SDD Storage	256GB SDD Storage
Integrated Intel® HD UHD Graphics 630	GT 1030 Independent Graphics	Integrated Intel® HD UHD Graphics 630	GT 1030 Independent Graphics	Integrated Intel® HD UHD Graphics 630

PC modules do not ship with an operating system. Clear Touch® provides operating system installation services & recommends Microsoft Windows 10.

Accessories



CTI-MOUNT-FIXW-V3
Fixed Wall Mount

Features

- Included with all panels
- Constructed of solid metal to prevent bowing and warping
- Supports up to 300 lbs

Warranty

90 day replacement warranty

Dimensions & Weight

Shipping weight 14 lbs
Shipping sizes (1 box)
CTI-MOUNT-FIXW-V3 40" x 11" x 3"



CTI-MOUNT-ADJW-V3
Adjustable Wall Mount

Features

- Supports 6000K & 7000X Clear Touch® panels
- Electrical powered stand makes adjustments simple
- Quiet electrical motor
- 28" height adjustment
- Optional shelf available

Warranty

3 year warranty on all components

Dimensions & Weight

Shipping weight 73 lbs
Shipping sizes (1 box)
CTI-MOUNT-ADJW-V3 . . . 38" x 29" x 8"



CTI-STAND-FIXM-V2
Three Position Fixed Mobile Stand

Features

- Supports 6000K & 7000X Clear Touch® panels up to 70"
- Mobile base for easy transport
- Weight load capacity of 132 lbs
- Convenient shelving for your other devices
- Square-shaped mobile base
- 3 different manual height adjustment settings for different applications
- Complete system comes in black

Warranty

90 day replacement warranty

Dimensions & Weight

Shipping weight 95 lbs
Shipping sizes (1 box)
CTI-STAND-FIXM-V2 32" x 11" x 9"



CTI-STAND-FIXM-V3
Fixed Mobile Stand

Features

- Supports 6000K & 7000X Clear Touch® panels
- Strong and sturdy, supporting up to 300 lbs
- Three different height settings for different applications
- C-shaped mobile base provides greater accessibility for all users
- Removable shelf included

Warranty

90 day replacement warranty

Dimensions & Weight

Shipping weight 75 lbs
Shipping sizes (1 box)
CTI-STAND-FIXM-V3 . . . 47" x 30" x 7"



CTI-STAND-ADJM-V3
Adjustable Mobile Stand

Features

- Supports 6000K & 7000X Clear Touch® panels
- Fully adjustable height
- Electrical powered stand makes adjustments simple
- Quiet electrical motor
- C-shaped mobile base provides greater accessibility for all users
- Optional shelf available

Warranty

3 year warranty on all components

Dimensions & Weight

Shipping weight 107 lbs
Shipping sizes (2 boxes)
CTI-MOUNT-ADJW-V3 . . . 38" x 29" x 8"
CTI-STAND-MBBL-V3 . . . 53" x 31" x 5"



EXCLUSIVE TO 7000X

CTI-STAND-CONM-V3
Convertible Mobile Stand

Features

- Supports 7000X Clear Touch® panels
- Electrical powered stand makes adjustments simple
- Quiet electrical motor
- C-shaped mobile base provides greater accessibility for all users
- Fully adjustable height & angle
- Intelligent, anti-collision design
- Optional shelf available

Warranty

3 year warranty on all components

Dimensions & Weight

Shipping weight 146 lbs
Shipping sizes (3 boxes)
CTI-STAND-MCCM-V3 . . . 30" x 11" x 9"
CTI-STAND-TADM-V3 . . . 35" x 30" x 19"
CTI-STAND-MBBL-V3 . . . 53" x 31" x 5"

Accessories



WiFi Module

Stay Connected

Enjoy a more stable bandwidth and less channel interference with the Clear Touch® WiFi Module. This WiFi Module connects seamlessly with your 6000K or 7000X panels and delivers secure access to the internet in your office.

The WiFi Module can also be set as a public hotspot to let your phone, tablet, or notebook get online when the Clear Touch® interactive display is connected to the internet.

- Dual WiFi bandwidth: 2.4GHz / 5GHz
- Simple to install into the panel
- Needed to run Clear Touch Collage™



Mini Wireless Keyboard & Touchpad

Step Away from the Screen

With the Clear Touch® Mini Wireless Keyboard & Touchpad, you gain the freedom to move about and interact with your audience while controlling every detail of your presentation.

Change slides, type notes, zoom in, zoom out, and highlight important information—all from up to 32 feet away. The full QWERTY keyboard allows you to enter text without returning to your PC or laptop. Then, with the simple touch of a button, the device converts to a classic touchpad for easier screen navigation and control.

- Includes a full QWERTY keyboard & classic touchpad in one device
- Small and lightweight for easy portability
- Compatible with all Clear Touch® panels as well as a wide range of interactive panels, laptops, tablets, and smart TVs



1080P Ultra-Wide Field Web Camera

Bring the Entire Group to the Table

The Clear Touch® Web Camera extends the collaborative capabilities of Clear Touch® panels, bringing enhanced video and audio capabilities to your interactive panel.

The Web Camera features wide-angle viewing and a built-in microphone so your entire team can be seen and heard. In addition, installation is easy as the Web Camera comes equipped with rotary brackets that fit the Clear Touch® panels.

- Creates a clear and sharp image even in low light environments.
- Built-in microphone array to pick up sound equally from all directions
- Wide angle field of view. Maximum horizontal field of view can be 120°



Wireless Document Camera DC100

See from a Whole New Angle

The Clear Touch® Document Camera enables presenters to project any object or text clearly to the entire room.

This ability to see an object or text clearly from anywhere in the room improves collaboration, comprehension, and understanding. There's no more gathering the team around a printout or following along on individual handouts.

- Built in microphone and light
- Compatible with all Clear Touch® panels and other devices
- Comes with lite-version of Clear Touch Canvas™
- Wireless configurations enable mobile use



CLEAR DIGITAL

Supplying evolutionary solutions,
marketed exclusively by Clear Touch®.

getcleardigital.com

Evo Lite

SIGNAGE. EVOLVED.



Evo™ Lite is a striking, mobile, water-resistant display that delivers image and video content.

This simple, versatile, battery-powered digital signage allows your messages to be wirelessly displayed anywhere.

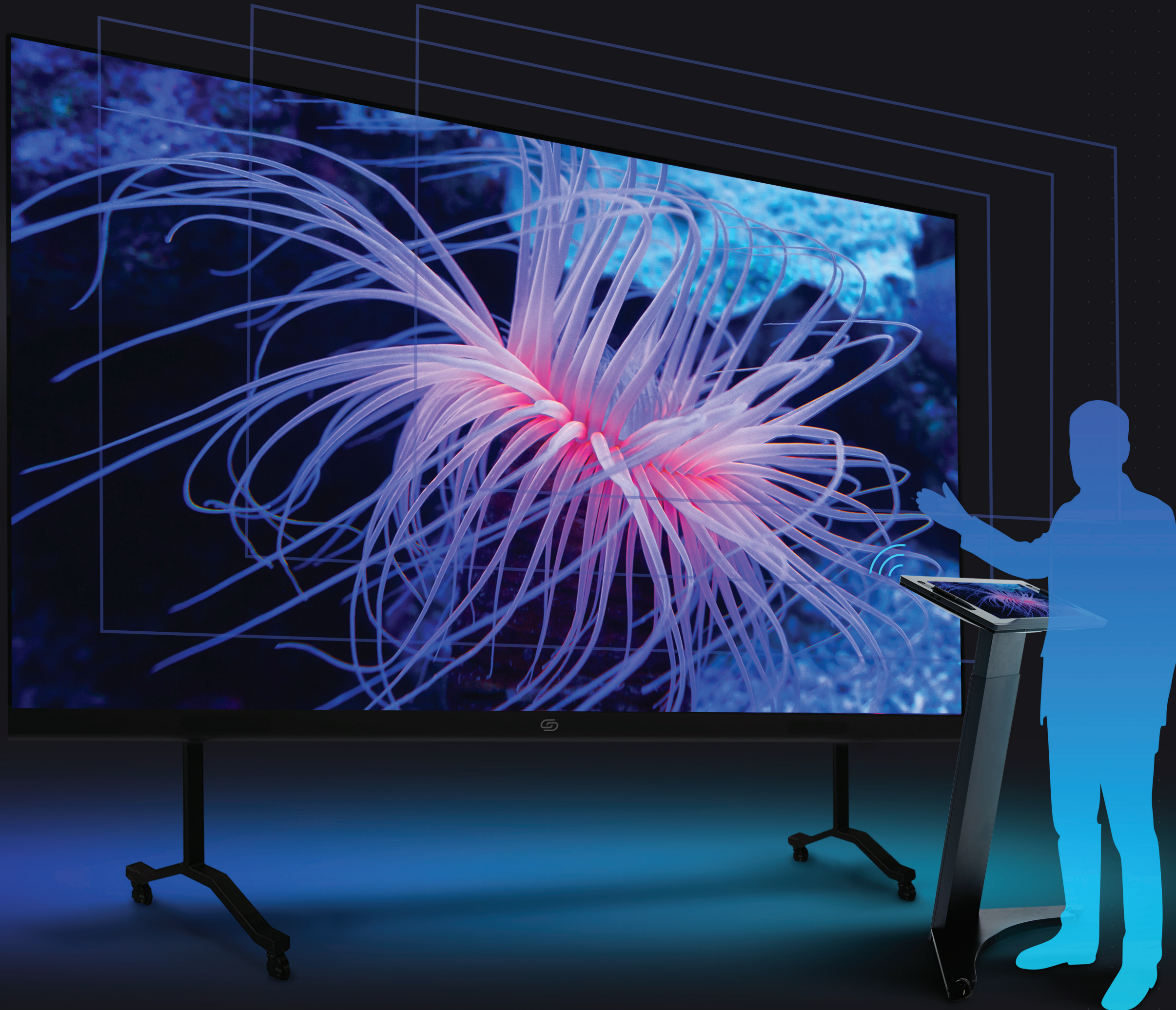
- Vivid Brilliance:** HD quality display
- Massive Screenspace:** 40" screen
- Pure Simplicity:** USB content upload
- Rugged Durability:** Water & impact resistant
- Long-Lasting Battery:** 14+ hours



Vue

A WELCOME SIGHT

The all-new LED video wall by Clear Digital™ is the most affordable, easy-to-assemble LED video wall on the market. Display your message in vivid color and reach your audience with impactful messages, video, and images—all without “seams” interfering with the picture. In addition, the wall offers full front maintenance and can be wall-mounted (with no back maintenance access area needed) or mounted on a Clear Digital stand. The Vue Video Wall also features our new LED-protective PixelGuard™ to better protect against contact and ambient light.



4 SIZES AVAILABLE:
110", 138", 165" & 220"

35 MM THIN BODY

CHANGE & CALIBRATE
INDIVIDUAL TILES

1920 X 1080 LED DISPLAY

FRONT END ACCESS FOR
SEAMLESS SETUP AND
MAINTENANCE

PIXEL PITCH OF 1.2-2.5 MM

INTEGRATED SYSTEM REMOVES
COMPLICATED WIRING

NO “SEAMS” ON SCREEN

BRIGHTNESS SETTINGS
CAN BE ADJUSTED

Specs & Features

Clear Digital Podium

Features

- Wireless projection capabilities to all Clear Touch® and Clear Digital™ products and other, third-party devices
- Comes with built-in PC
- Detachable top portion with PC allows for use on other, existing podiums
- Height adjustable mount
- Wheeled base for easy movement
- Comes with a lite-version of Clear Touch Canvas™ for presentations
- Features full high definition screen



Scan for a digital copy



Clear Touch Academy™

Self-Paced Classes Turn Customers Into Clear Touch® Experts

Clear Touch Academy™ is one more way we continue to support customers long after your initial purchase—helping our users get the most value out of their panels. Clear Touch Academy™ members get free, 24/7, access to our:

- Training portal with all training modules
- Technical support community
- Exclusive video content, web clinics, and written content
- Additional presentation-building and software tips

Clear Touch Capital™

Flexible Financing & Leasing

Clear Touch Capital™ is designed specifically with annual budgets in mind, helping you make your technology purchases match your fiscal year. We offer competitive, fixed-payment and fixed-rate loan, and lease structures.

Loan terms start at 24 months, and we can allow for skip payments and seasonal payments so that you can match your repayment plan to your fiscal year. We offer:

- Tax exempt municipal loans
- Taxable loans
- Operational leases

If you're considering purchasing or upgrading your Clear Touch® panels, ask us for a proposal that includes financing.

To learn more about our support options, visit getcleartouch.com.