



DIGITALINX  
BY LIBERTY AV SOLUTIONS

## DL-HD50C-WPKT-W Install Guide



11675 Ridgeline Drive  
Colorado Springs, CO  
80921

Phone: 719-260-0061  
Toll-Free: 800-530-8998  
Fax: 719-260-0075

## Thank you for purchasing this product

For optimum performance and safety, please read these instructions carefully before connecting, operating or adjusting this product. Please keep this manual for future reference.

## Surge protection device recommended

This product contains sensitive electrical components that may be damaged by electrical spikes, surges, electric shock, lightning strikes, etc. Use of surge protection systems is highly recommended in order to protect and extend the life of your equipment.

## Table of Contents

1. Introduction.....	1
2. Features.....	1
3. Package Contents.....	1
4. Specifications.....	2
5. Operation Controls and Functions.....	3
5.1. Transmitter Panel.....	3
5.2. Receiver Panel.....	3
6. Application Example.....	4

## 1. Introduction

This product consists of an HDMI wall plate transmitter and a CAT receiver. The CAT output can extend 1080P signal up to 164ft / 50 meters via a single CAT6/6a cable. It supports Power Over Cable (POC) function that allows for greater flexibility in installations.

## 2. Features

- ☆ HDMI 1.3 and HDCP 1.4 compliant
- ☆ Video resolution up to 1080P
- ☆ HDMI signal can be extended up to 164ft / 50 meters via a single CAT5e/6/6a cable
- ☆ Support POC function (Only from receiver to transmitter)

## 3. Package Contents

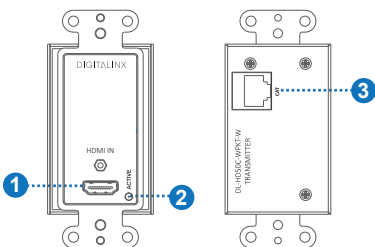
- ① 1 × HDMI Wall Plate Transmitter
- ② 1 × Digitalinx DL-HD50C-WPKT-W Receiver
- ③ 1 × Cover Plate
- ④ 1 × 12V/1A Power Supply with multi-country standard adapters
- ⑤ 1 × User Manual

## 4. Specifications

Technical	
HDMI Compliance	HDMI 1.3
HDCP Compliance	HDCP 1.4
Video Bandwidth	4.85 Gbps
Video Resolution	480P60~1920x1080@60Hz
HDMI Audio Formats	PCM2.0/5.1/7.1CH, Dolby Digital, Dolby True HD, DTS
Transmission	50M (1080P)
ESD Protection	Human-body Model: $\pm 8\text{kV}$ (Air-gap discharge), $\pm 4\text{kV}$ (Contact discharge)
Connection	
Transmitter	Input: 1×HDMI Type A [19-pin female] Output: 1×RJ45 [HDBaseT]
Receiver	Input: 1×RJ45 [CAT] Output: 1×HDMI Type A [19-pin female]
Mechanical	
Housing	Transmitter: Plastic-Front Panel, Metal-Rear Case Receiver: Metal
Color	Transmitter: CatWhite-Front Panel, Black-Rear Case Receiver: Black
Dimensions	Transmitter: 103.5mm(W) × 46mm(D) × 28mm(H) Receiver: 79.5mm(W) × 68mm(D) × 16.5mm(H)
Weight	Transmitter: 104g, Receiver: 133g
Power Supply	Transmitter: Powered by the receiver through POC function Receiver: DC 12V power supply
Power Consumption	2.52W (Max)
Operating Temperature	0°C ~ 40°C / 32°F ~ 104°F
Storage Temperature	-20°C ~ 60°C / -4°F ~ 140°F
Relative Humidity	20~90% RH (non-condensing)

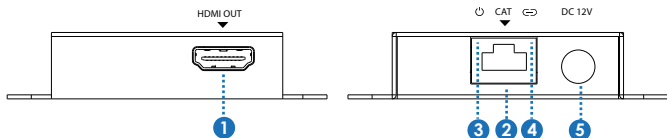
## 5. Operation Controls and Functions

### 5.1 Transmitter Panel



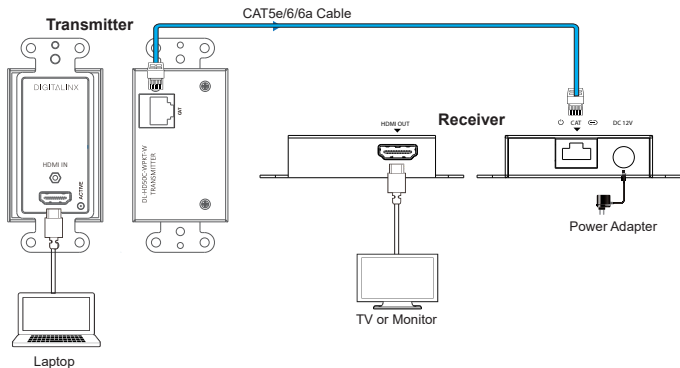
No.	Name	Function Description
1	HDMI IN port	HDMI signal input port, connect to HDMI source device such as DVD Blu-ray player or Laptop with HDMI cable.
2	ACTIVE LED	HDMI signal input indicator. When the transmitter is powered on or when there is HDMI signal input, the green LED will be on.
3	CAT port	Connect to the CAT port of the receiver with CAT6 cable.

### 5.2 Receiver Panel



No.	Name	Function Description
1	HDMI OUT	HDMI signal output port, connect to HDMI display device such as TV or Media player with HDMI cable.
2	Power indicator	Green LED will be on when the receiver is powered on.
3	CAT port	Connect to the CAT port of the transmitter with CAT6 cable.
4	Signal input indicator	When the receiver receives a signal, yellow LED will be on (even though the receiver doesn't connect to a display device); When there is no signal input, LED will be off.
5	DC 12V	DC 12V power supply port.

## 6. Application Example



The terms HDMI and HDMI High-Definition Multimedia interface, and the HDMI Logo are trademarks or registered trademarks of HDMI Licensing LLC in the United States and other countries.