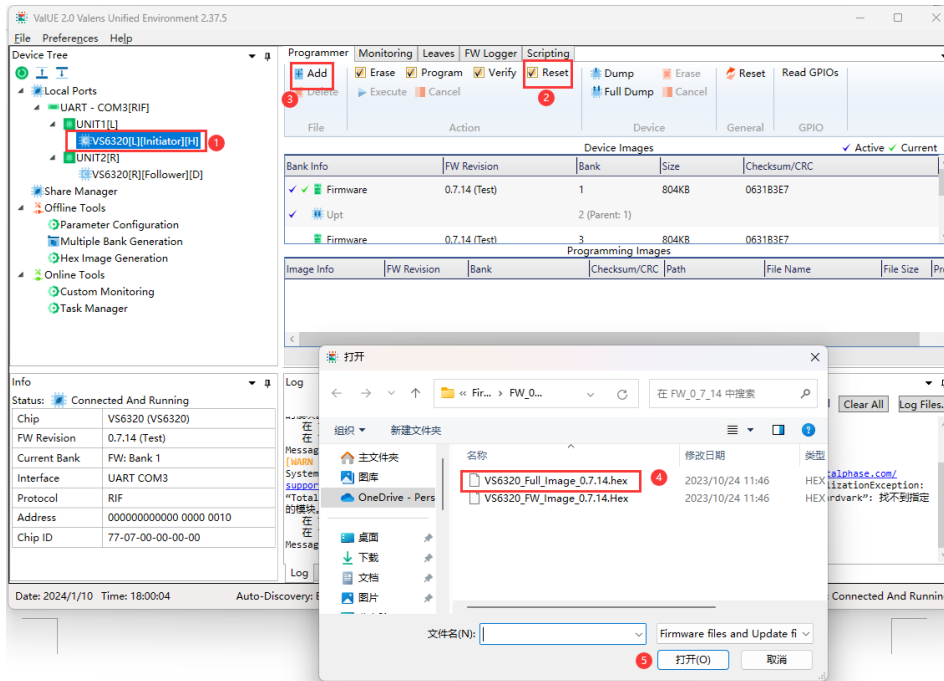


VS6320 FW Upgrade Guide_v2

1. System connection:
 - a. Connect TX SERVICE port to your laptop through a USB-C to USB-A cable.
 - b. Connect TX and RX with a CAT cable so that you can upgrade RX FW from TX directly.
 - c. Connect power supply to TX or RX (PoC supported).
 - d. Power on system.
2. FW upgrade:
 - a. Open Valens ValUE 2.0 program in your laptop (v2.37.5 or later version).
 - b. Select TX VS6320[L][Initiator][H].
 - c. Select Reset.
 - d. Add FW file.
 - e. Execute TX FW upgrade.



ValUE 2.0 Valens Unified Environment 2.37.5

File Preferences Help

Device Tree

- Local Ports
 - UART - COM3[RIF]
 - UNIT1[L]
 - VS6320[L][Initiator][H]
 - UNIT2[R]
 - VS6320[R][Follower][D]
- Share Manager
- Offline Tools
 - Parameter Configuration
 - Multiple Bank Generation
 - Hex Image Generation
- Online Tools
 - Custom Monitoring
 - Task Manager

Programmer | Monitoring | Leaves | FW Logger | Scripting

Add Erase Program Verify Reset Dump Erase Reset Read GPIOs
 Delete Execute Cancel Full Dump Cancel Full Dump Cancel

File Action Device General GPIO

Device Images

Bank Info	FW Revision	Bank	Size	Checksum/CRC
✓ Firmware	0.7.14 (Test)	1	804KB	0631B3E7
✓ Upt		2 (Parent: 1)		
✓ Firmware	0.7.14 (Test)	3	804KB	0631B3E7

Programming Images

Image Info	FW Revision	Bank	Checksum/CRC	Path	File Name	File Size	P
Flash Header			N/A				
✓ Firmware	0.7.14 (Test)	1	0631B3E7				

Info

Status: Connected And Running

Chip	VS6320 (VS6320)
FW Revision	0.7.14 (Test)
Current Bank	FW: Bank 1
Interface	UART COM3
Protocol	RIF
Address	000000000000 0000 0010
Chip ID	77-07-00-00-00-00

Log

Auto Scroll Clear All Log Files...

Date: 2024/1/10 Time: 18:02:05 Auto-Discovery: Enabled UART Baud Rates (bps): 115200 Device: VS6320[L][Initiator][H] Status: Connected And Running

ValUE 2.0 Valens Unified Environment 2.37.5

File Preferences Help

Device Tree

- Local Ports
 - UART - COM3[RIF]
 - UNIT1[L]
 - VS6320[L][Initiator][H]
 - UNIT2[R]
 - VS6320[R][Follower][D]
 - Share Manager
 - Offline Tools
 - Parameter Configuration
 - Multiple Bank Generation
 - Hex Image Generation
 - Online Tools
 - Custom Monitoring
 - Task Manager

Programmer | Monitoring | Leaves | FW Logger | Scripting

Add Erase Program Verify Reset Dump Erase Reset Read GPIOs
 Delete Execute Cancel Full Dump Cancel Full Dump Cancel

File Action Device General GPIO

Device Images

Bank Info	FW Revision	Bank	Size	Checksum/CRC
✓ Firmware	0.7.14 (Test)	1	804KB	0631B3E7
✓ Upt		2 (Parent: 1)		
✓ Firmware	0.7.14 (Test)	3	804KB	0631B3E7

Programming Images

Image Info	FW Revision	Bank	Checksum/CRC	Path	File Name	File Size	P
Flash Header			N/A				
✓ Firmware	0.7.14 (Test)	1	0631B3E7				

Info

Status: Connected And Running

Chip	VS6320 (VS6320)
FW Revision	0.7.14 (Test)
Current Bank	FW: Bank 1
Interface	UART COM3
Protocol	RIF
Address	000000000000 0000 0010
Chip ID	77-07-00-00-00-00

Log

Auto Scroll Clear All Log Files...

```
[INFO ] 10.01.2024 18:06:12.3570 Port COM3: Device UNIT1[L].VS6320[L][Initiator][H]: Erase bank All: done 7.3148095 sec.
[INFO ] 10.01.2024 18:06:12.3570 Port COM3: Device UNIT1[L].VS6320[L][Initiator][H]: Burn storage E:\docs\Valens\VS6320\VS6320_Family\Firmware\FW_0_7_14\VS6320_Fu1_Image_0_7_14.hex: started.
```

Date: 2024/1/10 Time: 18:06:13 Auto-Discovery: Enabled UART Baud Rates (bps): 115200 Device: VS6320[L][Initiator][H] Status: Connected And Running

ValUE 2.0 Valens Unified Environment 2.37.5

File Preferences Help

Device Tree

- Local Ports
 - UART - COM3[RIF]
 - UNIT1[L]
 - VS6320[L][Initiator][H]
 - UNIT2[R]
 - VS6320[R][Follower][D]
 - Share Manager
 - Offline Tools
 - Parameter Configuration
 - Multiple Bank Generation
 - Hex Image Generation
 - Online Tools
 - Custom Monitoring
 - Task Manager

Programmer | Monitoring | Leaves | FW Logger | Scripting

Add Erase Program Verify Reset Dump Erase Reset Read GPIOs
 Delete Execute Cancel Full Dump Cancel Full Dump Cancel

File Action Device General GPIO

Device Images

Bank Info	FW Revision	Bank	Size	Checksum/CRC
✓ Firmware	0.7.14 (Test)	1	804KB	0631B3E7
✓ Upt		2 (Parent: 1)		
✓ Firmware	0.7.14 (Test)	3	804KB	0631B3E7

Programming Images

Image Info	FW Revision	Bank	Checksum/CRC	Path	File Name	File Size	P
Flash Header			N/A				
✓ Firmware	0.7.14 (Test)	1	0631B3E7				

Info

Status: Connected And Running

Chip	VS6320 (VS6320)
FW Revision	0.7.14 (Test)
Current Bank	FW: Bank 1
Interface	UART COM3
Protocol	RIF
Address	000000000000 0000 0010
Chip ID	77-07-00-00-00-00

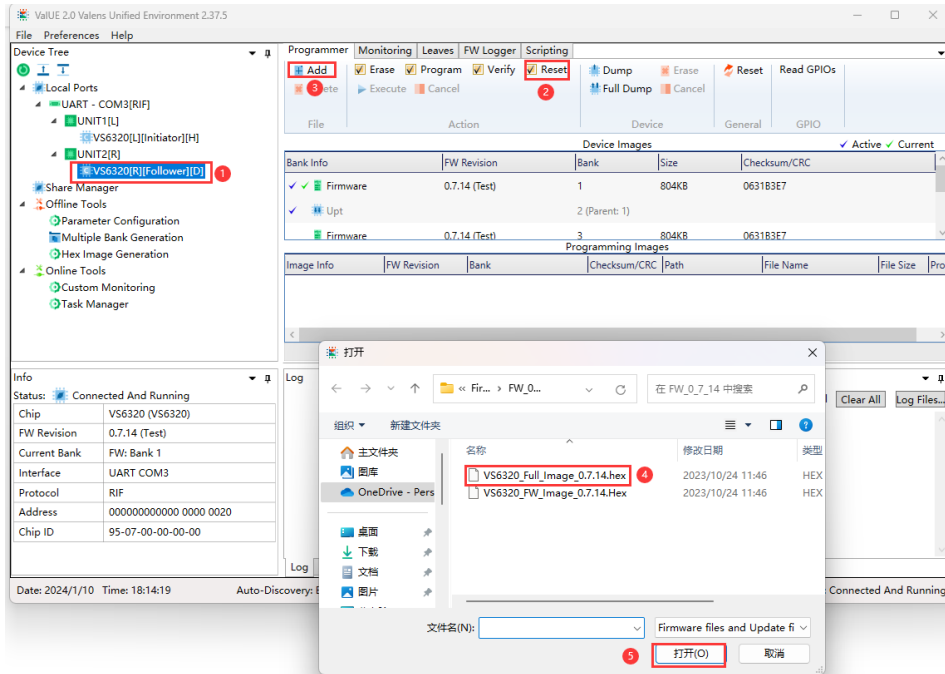
Log

Auto Scroll Clear All Log Files...

Operation Succeeded

Date: 2024/1/10 Time: 18:13:22 Auto-Discovery: Enabled UART Baud Rates (bps): 115200 Device: VS6320[L][Initiator][H] Status: Connected And Running

- f. Select RX VS6320[R][Follower][D].
- g. Select Reset.
- h. Add FW file.
- i. Execute RX FW upgrade.
- j. Finish.



Note:

1. TX and RX use the same FW file.
2. Select VS6320_Full_Image_x.x.xx.hex, not VS6320_FW_Image_x.x.xx.hex.