



# **2000 Series Firmware Update Instructions v2.12.x**

# About Update

## Firmware Version:

IPEX2001 – 2.12.13

IPEX2002 – 2.12.3

## What does the firmware update do?

### Improvements:

- Modifies log storage method
- Stabilizes Audio Sync with encoder and decoder transmissions
- Fixes RS232 termination for carriage return / line feed
- Reduces Latency
- Allows integration with IPEX2100 series devices

## How long will this take?

The update will take approximately 10-15 minutes to complete, depending on size of system.

This firmware update for the DigitalinxIP 2000 series can be applied to DigitalinxIP devices in large batches of 50 by using the *DigitalinxIP Updater*. The software tool allows you to select all encoders or decoders to apply the update while the devices are still live on the A/V network.

**Note:** This update is for 2000 series only. Do not perform update on 2100 or 5000 series devices. Do NOT perform this update on an IPEX2002 decoder with firmware that starts with 3.x.x.

# What you will need

- PC computer to conduct the update on the DigitalinxIP A/V network switch
- Category patch cable to connect computer to A/V network switch
- DigitalinxIP Updater Software Tool (included in zip file)
- Firmware update files (included in zip file)



## Warning:

- Be sure the power status for ALL DigitalinxIP devices is STABLE before and during the firmware update process otherwise the firmware update may fail and cause device to become unresponsive.

# Firmware Update Instructions

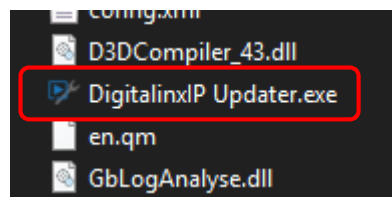
**STEP 1** – Extract all files from the firmware zip file on PC

**STEP 2** - Connect the PC to the DigitalinxIP A/V network switch using a category patch cable

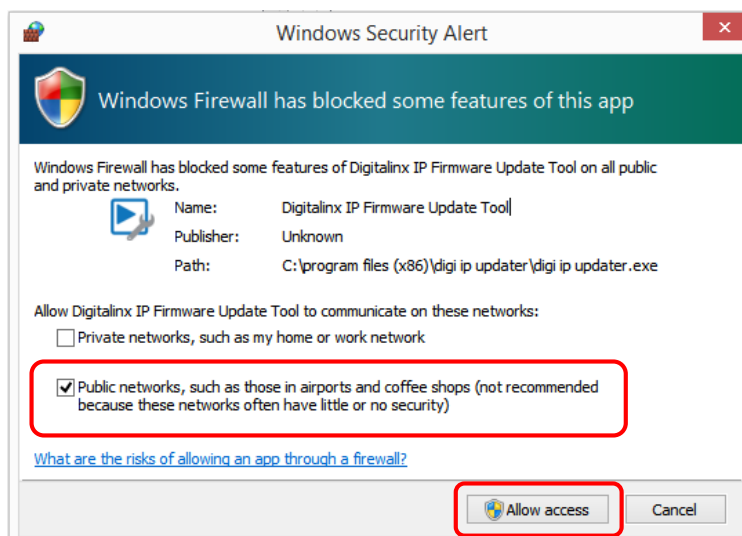
**STEP 3** – Be sure the IP address of the PC is in the Network ID range of the DigitalinxIP devices / system

*For Example:* IPEXCB default IP address is 169.254.1.1 / Subnet 255.255.0.0. To be in range of the DigitalinxIP devices, change the PC's IP address to 169.254.1.90 / Subnet 255.255.0.0. Be sure you don't enter an active address that is already taken by a currently installed DigitalinxIP device on the network

**STEP 4** – Double click on the *DigitalinxIP Updater* folder in the firmware package and locate and double click the *DigitalinxIP Updater.exe* file to start the update application



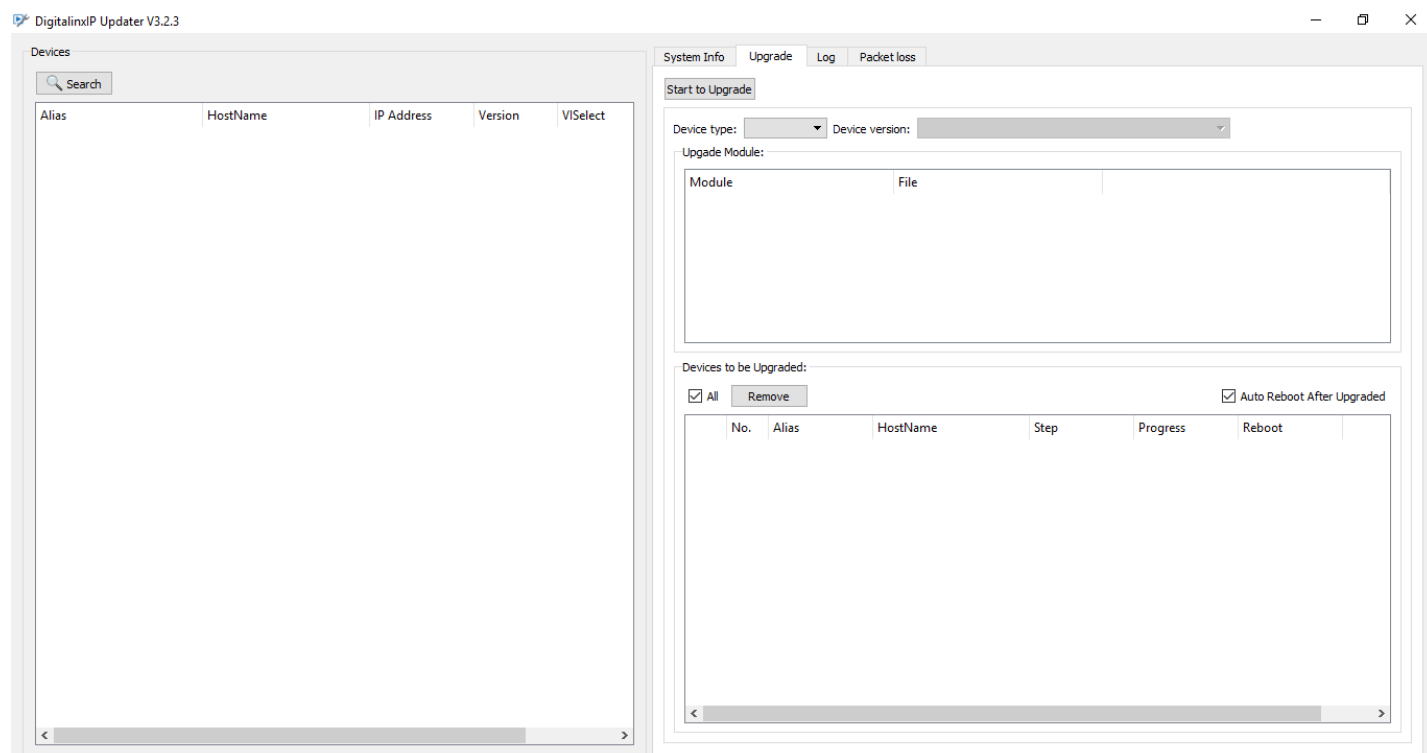
**Note:** If Windows firewall or Defender warning pops up at any time while using the update utility, tick the check boxes for private and public networks and click Allow Access



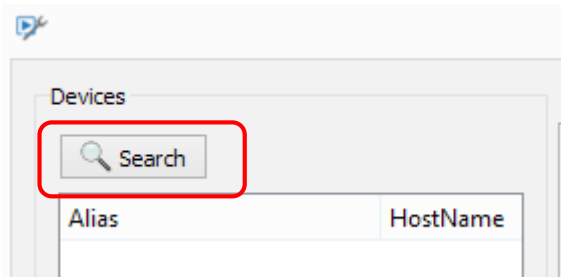
**STEP 5** - When prompted, choose appropriate communication mode from the *CHOOSE COMMUNICATE MODE* pop-up window. If connected directly to A/V network switch with a category cable, choose *Network*. If connected to the IPEXCB directly with a RS232 connection, choose *Serial*.



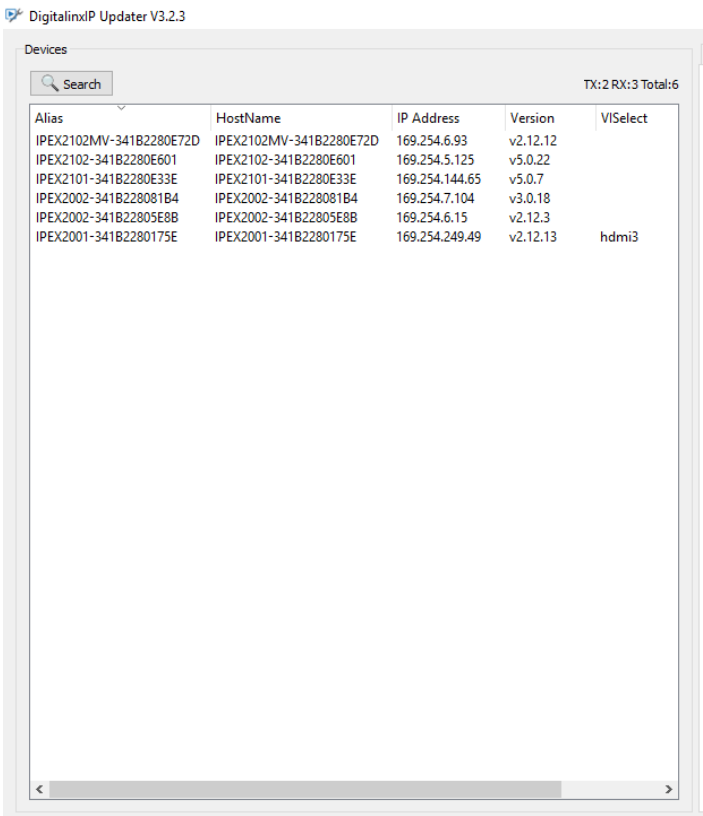
The following screen will then appear. Be sure you are using DigitalinxIP Updater v3.2.3



**STEP 6** - Click *Search* under the *Devices* section to instantly locate all devices on the DigitalinxiP A/V network.



A list will now populate of all DigitalinxiP devices on the network in the *Devices* section to the left. A total number of TX and RX as well as device total will also appear, the current firmware version for the device will also appear under *Version*.

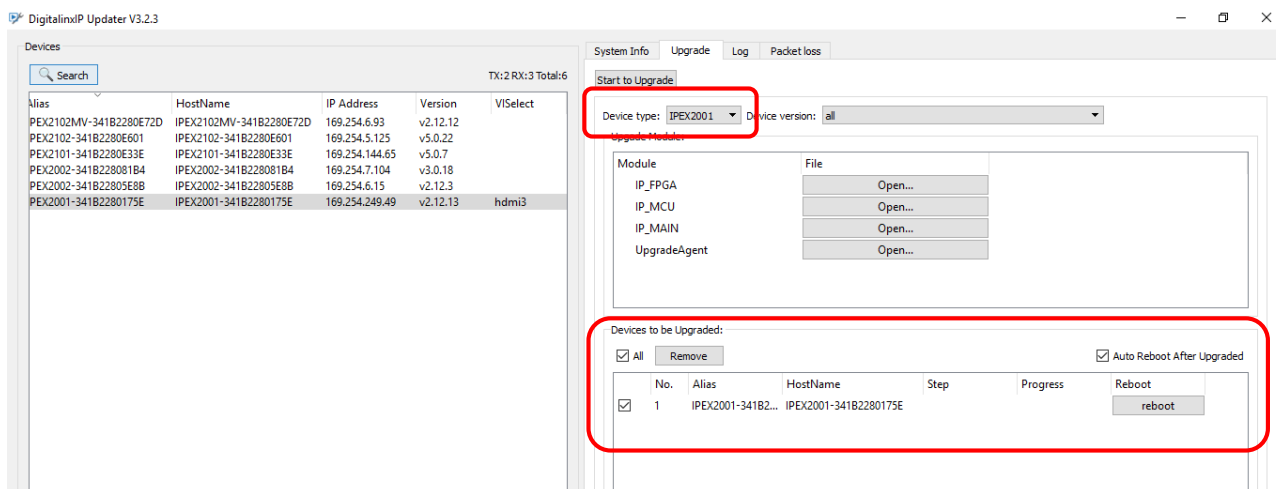


**NOTE** - Before performing an update on a device type check the current firmware version in this window to be sure you are applying the correct update.

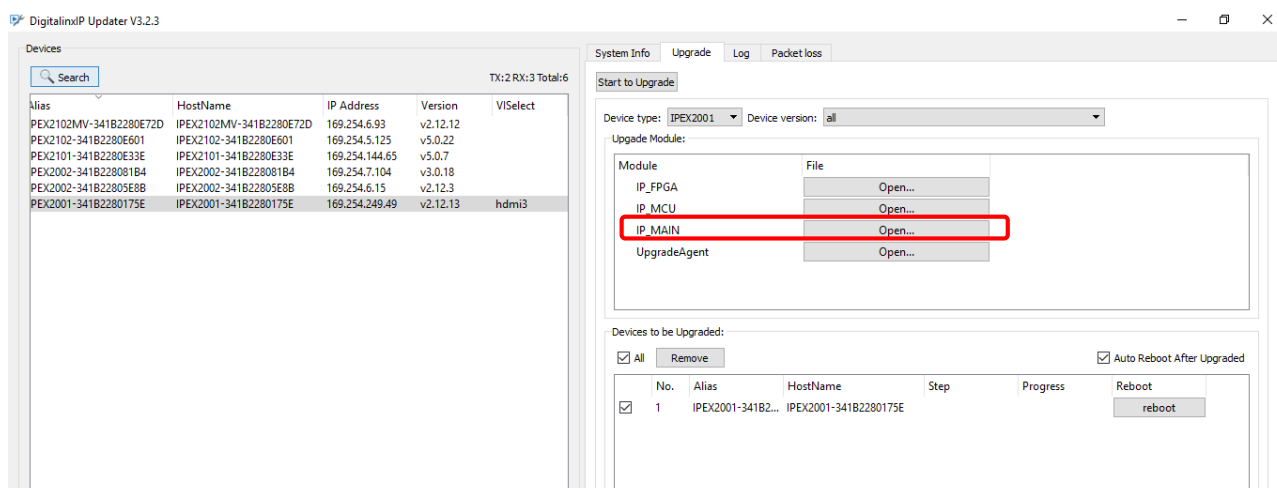
**DO NOT UPDATE A 2100, 5000 SERIES PRODUCT WITH THESE UPDATES. DO NOT UPDATE AN IPEX2002 THAT STARTS WITH FIRMWARE VERSION 3.X.X**

**STEP 7** - To begin updating devices in batches, select the *IPEX2001* device from the *Device Type* drop down menu in the *Upgrade* menu tab. This will populate a list of ALL IPEX2001 devices on the network in the *Devices to be Upgraded* section below. You can check the *All* button in the *Devices to be Upgraded* section to update all at once or pick and choose what you would prefer to update.

**Note:** It is recommended that you only upgrade a maximum of 50 devices at once

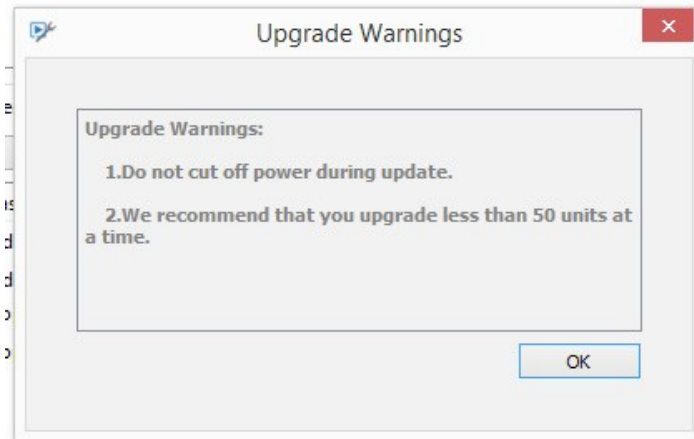


**STEP 8** - Once you have selected the IPEX2001 encoder devices to upgrade, click *OPEN* in the *Upgrade Module* section to the right of the *IP\_MAIN* option and select the firmware file labeled *IPE2000.upgrade.v2.13.3.bin* from the extracted zip file

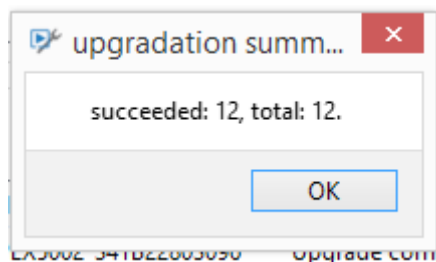


**Note:** The update file labeled *IPE2000.upgrade.v2.12.13.bin* is for IPEX2001 encoders ONLY, the file labeled *IPD2000.upgrade.v2.12.3.bin* is for IPEX2002 decoders ONLY. If you attempt to install the file for the encoder upgrade to the decoders or vice versa in the system, the software will notify you that this is not for the devices.

**STEP 9** - Click the *Start to Upgrade* button. This will prompt a pop up window that alerts you to NOT disconnect power at any time during the update and to only update 50 devices at once. Click *OK* to begin update.



**STEP 10** - The devices will now begin to upgrade and each device will reboot after update is successful. When all devices selected have been updated a pop up window will alert you to the number of items attempted to update versus items successful. Click *OK*. Once all items have been upgraded they will disappear from the device list.



**STEP 11** - To update the decoders in the system, repeat steps 7-11 for IPE2002 device types. Be sure to use the *IPD2000.upgrade.v2.12.3.bin* firmware file to update the decoders.

**STEP 12** - Once there are no more devices to update, close the software- your updates are now complete

**STEP 13** - Reboot DigitalinXP A/V network switches

For Technical Support please call our toll free number at 800-530-8998, OPTION 3 or email us at  
supportlibav@libav.com

[www.libav.com](http://www.libav.com)

DigitalinXP is a brand of:



**LIBERTY**  
**AV SOLUTIONS**

A SUBSIDIARY OF WESCO DISTRIBUTION, INC.

11675 Ridgeline Drive  
Colorado Springs, Colorado  
80921 USA  
Phone: 719-260-0061  
Fax: 719-260-0075  
Toll-Free: 800-530-8998