

Intelix Display Control Installation Notes

Introduction

The Intelix Display Control application allows a systems integrator to upload RS-232 control codes to a compatible Intelix switcher. These control codes are used by the Intelix switcher to control a display device, such as turn the display on when an input source signal is detected or shut down the display after 3 hours of non-use. This document explains important issues involved with the installation and removal of this application.

Setup.exe

To install the Intelix Display Control application, "Intelix Display Control", run setup.exe from any folder.

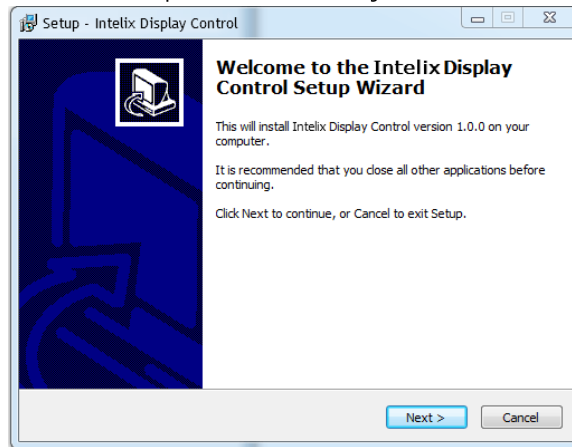


Figure 1 - Setup Application

System Drivers: comdlg32.ocx and mscomm32.ocx

The Intelix Display Control application utilizes two communications drivers: comdlg32.ocx and mscomm32.ocx and setup installs these files in their appropriate locations within the operating system. In Microsoft Windows XP operating systems these files are placed in the \Windows\System32 folder. For Microsoft Windows 7 (64-Bit), these files will be installed in the \Windows\SysWOW64 directory.

Windows 7 (64-Bit)

In some instances, Windows 7 64-bit mode creates an error message indicating that it cannot find one of the two files mentioned above (see Figure 2 below).

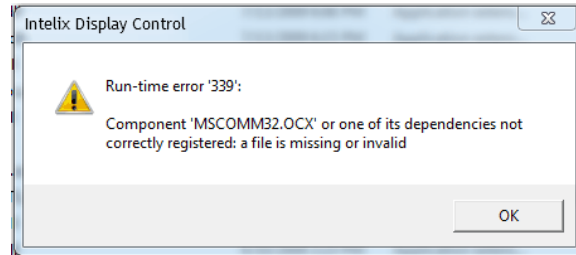


Figure 2 - RunTime Error

In this case, you will need to run Intelix Display Control in Compatibility Mode.

Right click on the application icon and select Properties. From the application properties select the Compatibility tab and select Compatibility Mode as shown in

Figure 3 below.

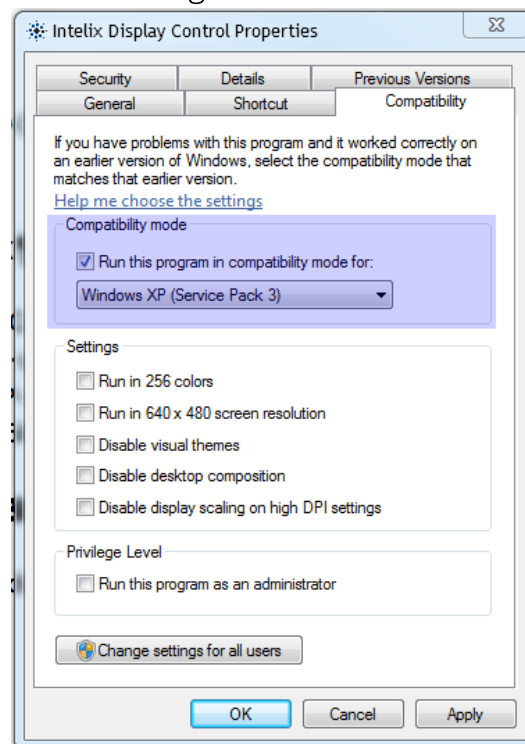


Figure 3 - Running in Compatibility Mode

To Uninstall

To uninstall this application, go to the Windows Control Panel and select Uninstall or Change Programs (see Figure 4 below).

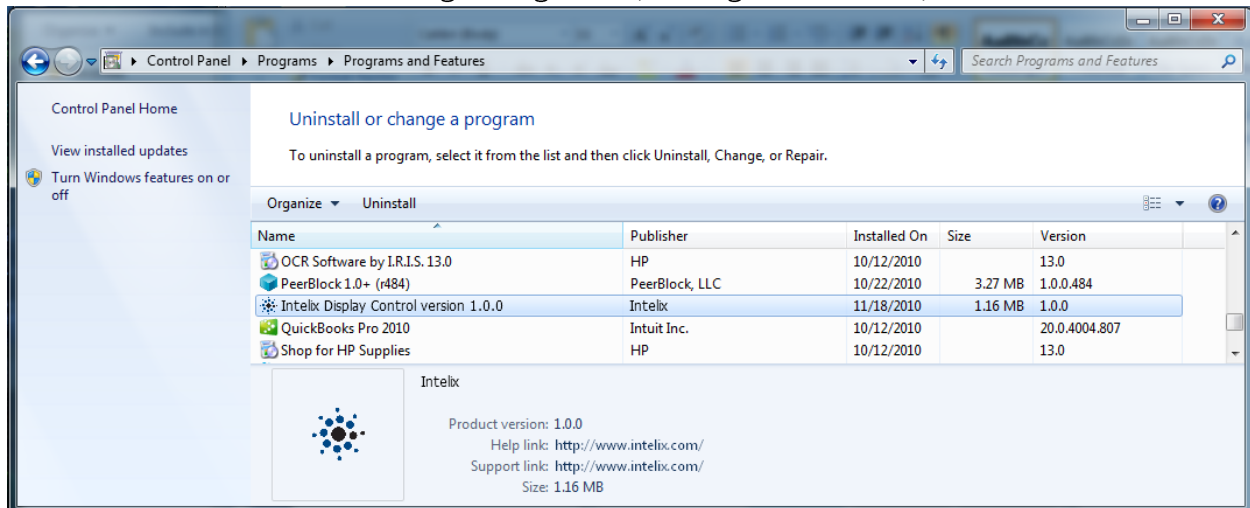


Figure 4 - Uninstall Application

Double click on Intelix Display Control and the program will uninstall automatically itself. The removal routine will delete all files and remove all icons.