



Firmware Updating Operation – DigitalinxIP IPEXCB

Firmware Version: Adapter Module – 8.4.3 / Web Module – 8.4.7

Date: 12/03/2019

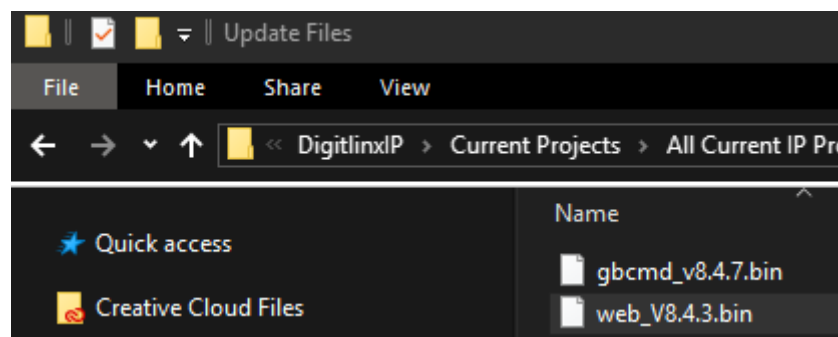
What does this firmware update do?

Adds Digi IP 2100 Series Compatibility

Instructions

Follow the steps below to update the IPEXCB firmware.

1. Extract the zip file into a folder on your computer. You will notice two .bin files in the 'Update Files' folder, one is labeled **gbcmd_v8.4.7.bin** which is for the **ADAPTER MODULE** and the other is labeled **Web_v8.4.3.bin** which is for the **WEB MODULE**.



2. Open a web browser on a computer that is connected to the A/V network switch and type in the IP address of the IPEXCB to access the web GUI.

Be sure that your computer is in the same IP range as the IPEXCB to access the web GUI, the default IP address of the IPEXCB is 169.254.1.1.

When prompted enter in '*admin*' for both the user name and password to access the web GUI



DIGITALINX
IP
BY LIBERTY AV SOLUTIONS

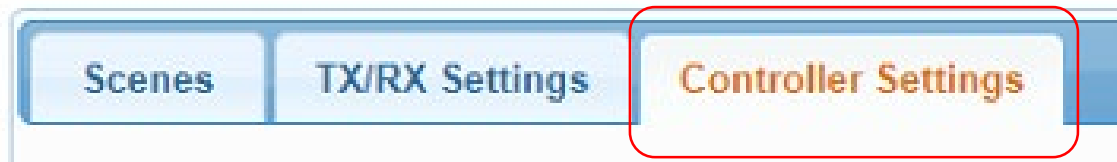
Welcome to the SC009

User Name:

Password:

☒ Remember Name ☒ Remember Password

3. Once you are logged in to the web GUI, navigate to the **CONTROLLER SETTINGS** tab.



4. Scroll down where you see the current 'Version' of the IPEXCB system. If the versions are prior control numbers before 8.4.3 / 8.4.7 it is ok to process this update. See example below...

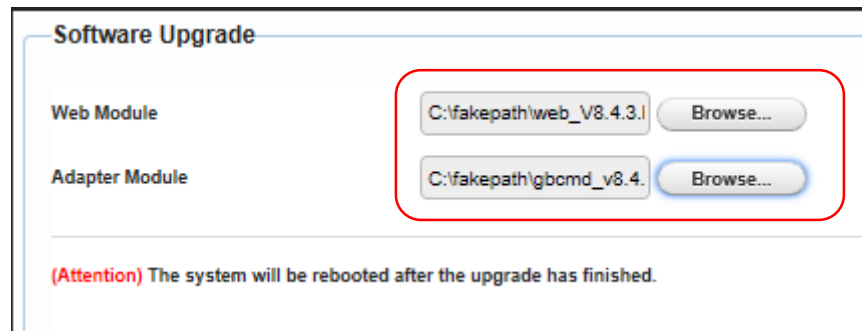


5. Scroll to the section labeled 'Software Upgrade'.

Click 'Browse' to the right of the 'Web Module' field and choose the file labeled **Web_v8.4.3.bin** from your firmware file list that you previously extracted.

Click 'Browse' to the left of the 'Adapter Module' and find the file labeled **gbcmd_v8.4.7.bin** from your firmware file list that you previously extracted.

Note: Make sure you are using the correct firmware file for each field otherwise processing errors and functionality of the IPEXCB will be affected



6. Click 'Upgrade' to begin update process. The IPEXCB once updated will reboot. Once the IPEXCB has fully rebooted, login to the web GUI again and navigate to the **CONTROLLER SETTINGS** tab and scroll down to check the 'Version' number to make sure your update was successful. It should read as follows...

(Attention) The system will be rebooted after the upgrade has finished.

