



# RACKS & ACCESSORIES

BUILT FOR AV INSTALLERS, WITH 68 YEARS OF EXCELLENCE AND DESIGN



1.800.530.8998 | [www.LibAV.com](http://www.LibAV.com) | +1.719.388.7542



# IMPROVE YOUR PROFITABILITY FROM SOURCE TO DISPLAY



## PRODUCTS:

BULK CABLE  
CONNECTORS  
DEVICES  
ENCLOSURES & ACCESSORIES  
FLATWIRE  
INSTALLATION ACCESSORIES  
KEystone INSERTS AND PLATES  
MOUNTS & ACCESSORIES

PANELCRAFTERS  
PATCH CABLES  
PATCH PANELS  
POWER MANAGEMENT  
PRE-MADE / INTERCONNECT  
RACKS & ACCESSORIES  
STRUCTURED SOLUTIONS  
TOOLS

## SERVICES:

THE EDGE ONLINE - NEW!  
RACK CONFIGURATOR - NEW!  
CUSTOM BUNDLING & PRINTING  
COOL SPOOL REEL BOX SYSTEM  
TECHNICAL SERVICES  
OFF SITE STAGING & CUSTOM KITTING  
CUSTOM PLATE DESIGN  
LIBERTY INVENTORY SERVICES



1.800.530.8998 | +1.719.388.7542 | [www.LibAV.com](http://www.LibAV.com)

Liberty AV Solutions is proud to present its Installer's Choice line of Racks & Accessories. While there are a lot of racks out there to choose from, we built our racks by working closely with AV installers to develop a line that is more robust and easier to install than anything else on the market.

We are dedicated to staying on the leading edge of the industry. This commitment keeps us versatile enough to respond to ever-changing AV ideas and demands as they arise which allows for quick follow through on standard and custom designed products.

Our racks and accessories have been designed with the future of AV technology in mind. We gathered a group of the industry's most experienced installers and used their input and expertise in developing Installer's Choice. The result is a line of racks that combine modern, streamlined design with an ease of use and flexibility that covers any installation level.

Trust your audio-visual components with the same award-winning design and manufacturing excellence the world's largest financial, insurance, aviation and defense organizations have enjoyed for nearly 7 decades.



# CONTENTS

CUSTOMIZE YOUR RACKS	01
WHICH RACK DO YOU NEED?	02 - 03
ETN RACK SERIES & ACCESSORIES	05-10
BTN RACK SERIES & ACCESSORIES	11-16
PTN RACK SERIES & ACCESSORIES	17-22
SNAPRAX SERIES & ACCESSORIES	23-29
CAT CABLES	30
PANELCRAFTERS® CUSTOM FACE PLATES	31-33
HDMI CABLES	34
TRIPP LITE POWER PROTECTION	35-38



**Work when you want,  
the way you want.  
Check out The Edge Online!**

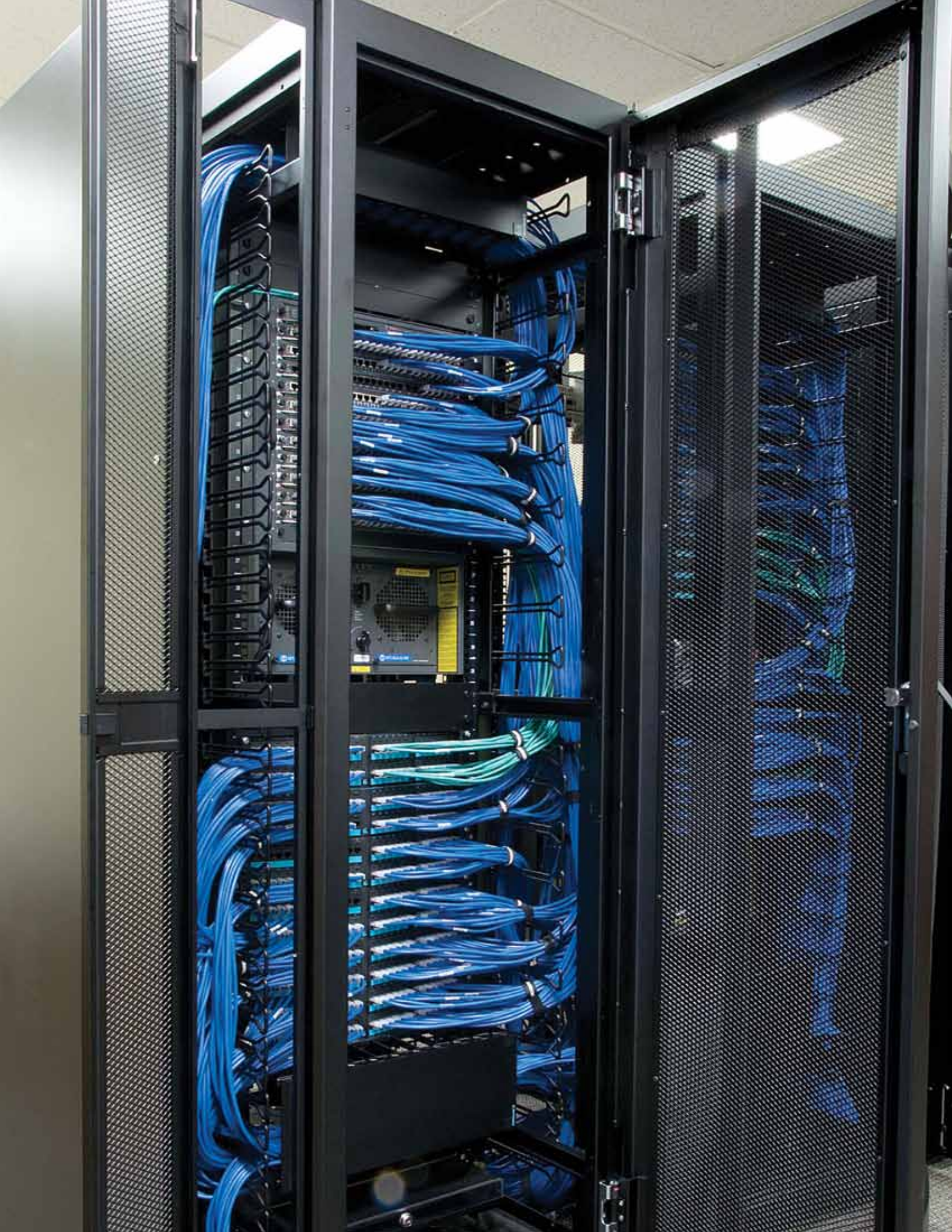
**THE EDGE ONLINE**  
[www.LibAV.com](http://www.LibAV.com)

“Whether I’m installing a residential, commercial or specialty project, Liberty not only has every rack and accessory I need but also the wire and cable to get everything I need at the right price.”

ERIC,  
SYSTEMS INTEGRATOR









## Customize Your Rack System!

Are you Looking to really make your rack different than anything else out there? Choose from one of the ten standard colors we offer or just tell us what color you want. Match a home's décor or custom color.

A colored rack also makes your projects stand out and differentiates you from your competition. Every project is different and can require a variety of custom options. We offer custom faceplates for shelves, and screen printing directly to the door or rack itself.

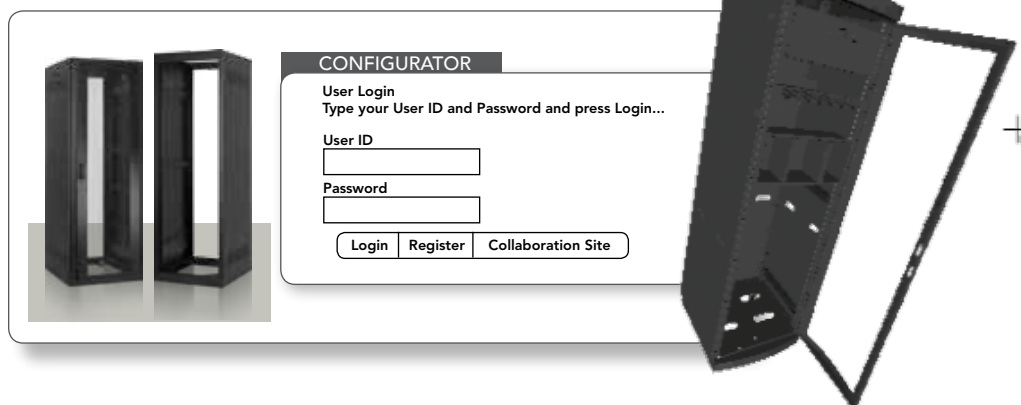
## Your Brand & Information

We offer custom screen printing on your rack to show off the quality and pride that went into your installation. These permanent calling cards make it easy for your clients to contact you for future projects and upgrades. Let everyone who sees it know that you are proud of the work you do!



## Online Configurator

Use our online configurator to build your own rack, select a pre-configured rack, and customize with accessories.



- One part number for efficient ordering and tracking
- See all accessories mounted in your rack
- 3D model to ensure you get the rack you want
- Configure an accessory order
- Complete bill of material with part numbers, descriptions, quantities and shipping weights.





## RACKS: WHICH RACK DO YOU NEED



Our racks and accessories have been designed with the future of AV technology in mind. We gathered a group of the industry's most experienced installers and used their input and expertise in

developing Installer's Choice. The result is a line of racks that combine modern, streamlined design with an ease of use and flexibility that covers any type of installation.

# WHICH RACK DO YOU NEED?



**FULL LINE OF  
ACCESSORIES  
AVAILABLE FOR  
ALL RACKS!**







## ETN CASTER BASE WITH GROUNDING STUDS & LEG LEVELERS INCLUDED

The ETN Series proves a welcome addition to the Installer's Choice rack line. This fully welded rack incorporates vented side panels and a heavy duty caster base as part of its robust design. Two removable rear plates are incorporated into the rack for electrical wiring. The ETN's 12,250 lbs. static load rating ensures the safety and security of

your AV components. The ETN Series includes two pair of fully adjustable mounting channels with marked RU heights allowing fast, easy equipment installation. ETN racks are available in six different heights and two depths, all featuring a textured powder coat finish. They can be used as standalone racks or joined together.



- Perfect for wiring closets, & whole house system locations
- Fully welded rack with permanent solid side panels
- Two pair of adjustable mounting channels, #10-32 tapped holes



## BTN CASTER BASE WITH GROUNDING STUDS & LEG LEVELERS INCLUDED

The BTN Series features open sides for easy access to AV equipment. This fully welded rack incorporates a heavy duty caster base for stability and mobility, and two removable rear plates at top and base for electrical wiring. The BTN Series has been tested to a static load rating of 12,250 lbs., ensuring the security of

your AV components. Two pair of fully adjustable mounting channels, featuring marked RU heights, make equipment installation quick and easy. BTN racks are available in four different heights and depths, all featuring a black textured powder coat finish. They can be used as standalone racks or joined together.



- Perfect for grouping together while still maintaining the look of a single rack
- Fully welded standard width open rack, removable side panels optional
- Two pair of adjustable mounting channels, #10-32 tapped holes



## PTN CASTER BASE WITH GROUNDING STUDS & LEG LEVELERS INCLUDED

The PTN Series has a 24" frame width and is the optimal rack for larger cabling requirements. This fully welded rack incorporates wider main channels and a heavy duty caster base as part of its robust design. Two removable rear plates at top and base are incorporated into the rack for electrical wiring. The PTN Series has been tested to a static load rating of

12,250 lbs., ensuring the security of your AV components. Two pair of fully adjustable mounting channels are included and feature marked RU heights for fast and easy equipment installation. PTN racks are available in four different heights and two depths, all featuring a black textured powder coat finish. They can be used as a standalone rack or joined together.



- Optimal for larger cabling requirements
- Fully welded open rack with 24" frame width, removable side panels optional
- Two pair of adjustable front to rear mounting channels, #10-32 tapped holes



## SNAPRAX CASTER BASE & CASTERS INCLUDED

This rack was designed to provide safe and secure mounting for all AV equipment while saving the installer valuable time at every job site. This versatile rack system offers six different heights and two different depth options, along with a wide assortment of accessories that allow you to mount your AV components and keep them performing at their best.

SnapRax ships unassembled in smaller packages which makes it ideal for maneuvering into smaller spaces. The open-frame design provides stability and makes assembly a snap in under 3 minutes. Shelves and other components can be added in minutes with the help of silk-screened RU markings. SnapRax has a UL tested load rating of 600 lbs. and offers cooling & power strip options to adapt to the evolving AV environment.



- Assembles on-site in less than 3 minutes
- Ships in individual boxes to maneuver through small spaces, tight hallways and narrow stairwells





THE EDGE ONLINE  
www.LibAV.com



# IMPROVE YOUR PROFITABILITY WITH LIBERTY'S "EDGE ONLINE" ADVANTAGES



**MY LIBERTY**

**MY CONTACTS**



## Liberty's "Smart Site"

- Search by product type, application or brand
- In-depth keyword functionality with new Smart Search
- Product suggestions that go with your purchase

## "My LIBERTY" for On The Go Users

- Enhanced for web enabled devices
- Quick ordering and quoting
- Easy shipment tracking

## "My CONTACTS" Customizable Interface

- Customize your entire office
- Get the right message to the right people
- Manage your orders

## Social Networking

- Exclusive promotions
- News & trends in the AV industry
- Build your network and get valuable product info





# ETN RACK SERIES



- Perfect for wiring closets & whole house system locations
- Fully welded rack with permanent vented side panels
- Two pair of adjustable mounting channels with #10-32 tapped holes
- Includes caster base with grounding studs & leg levelers





# ETN SERIES

- Perfect for wiring closets & whole house system locations
- Fully welded rack with permanent vented side panels
- Two pair of adjustable mounting channels with #10-32 tapped holes
- Includes caster base with grounding studs & leg levelers

The ETN Series proves a welcome addition to the Installer's Choice rack line. This fully welded rack incorporates vented side panels and a heavy duty caster base & 2 grounding studs as part of its robust design. Two removable rear plates are incorporated into the rack for electrical wiring. The ETN's 12,250 lbs. static load rating ensures the safety and security of your AV components. The ETN Series includes two pair of fully adjustable mounting channels with marked RU heights, allowing fast, easy equipment installation. ETN racks are available in six different heights and two depths, all featuring a black textured powder coat finish unless otherwise specified at time of order placement. These racks can be used as standalone racks or joined together.



CASTER BASE WITH GROUNDING STUDS & LEG LEVELERS INCLUDED

ETN 44RU RACK KIT	82.75" Height	20" Depth	<b>R-ETN-44U22-20</b>
ETN 40RU RACK KIT	75.75" Height	20" Depth	<b>R-ETN-40U22-20</b>
ETN 35RU RACK KIT	67" Height	20" Depth	<b>R-ETN-35U22-20</b>
ETN 27RU RACK KIT	53" Height	20" Depth	<b>R-ETN-27U22-20</b>
ETN 21RU RACK KIT	42.5" Height	20" Depth	<b>R-ETN-21U22-20</b>
ETN 18RU RACK KIT	34.25" Height	20" Depth	<b>R-ETN-18U22-20</b>
ETN 44RU RACK KIT	82.75" Height	25" Depth	<b>R-ETN-44U22-25</b>
ETN 40RU RACK KIT	75.75" Height	25" Depth	<b>R-ETN-40U22-25</b>
ETN 35RU RACK KIT	67" Height	25" Depth	<b>R-ETN-35U22-25</b>
ETN 27RU RACK KIT	53" Height	25" Depth	<b>R-ETN-27U22-25</b>
ETN 21RU RACK KIT	42.5" Height	25" Depth	<b>R-ETN-21U22-25</b>
ETN 18RU RACK KIT	34.25" Height	25" Depth	<b>R-ETN-18U22-25</b>

## FACE MOUNT DOORS



ETN 44RU Face Mount Flat Solid Door	<b>DK-AFS-44U22</b>
ETN 40RU Face Mount Flat Solid Door	<b>DK-AFS-40U22</b>
ETN 35RU Face Mount Flat Solid Door	<b>DK-AFS-35U22</b>
ETN 27RU Face Mount Flat Solid Door	<b>DK-AFS-27U22Z</b>
ETN 21RU Face Mount Flat Solid Door	<b>DK-AFS-21U22</b>
ETN 18RU Face Mount Flat Solid Door	<b>DK-AFS-18U22</b>



ETN 44RU Face Mount Flat Screen Door	<b>DK-AFZ-44U22</b>
ETN 40RU Face Mount Flat Screen Door	<b>DK-AFZ-40U22</b>
ETN 35RU Face Mount Flat Screen Door	<b>DK-AFZ-35U22</b>
ETN 27RU Face Mount Flat Screen Door	<b>DK-AFZ-27U22Z</b>
ETN 21RU Face Mount Flat Screen Door	<b>DK-AFZ-21U22</b>
ETN 18RU Face Mount Flat Screen Door	<b>DK-AFZ-18U22</b>



ETN 44RU Face Mount Flat Polycarbonate Door	<b>DK-AFP-44U22</b>
ETN 40RU Face Mount Flat Polycarbonate Door	<b>DK-AFP-40U22</b>
ETN 35RU Face Mount Flat Polycarbonate Door	<b>DK-AFP-35U22</b>
ETN 27RU Face Mount Flat Polycarbonate Door	<b>DK-AFP-27U22</b>
ETN 21RU Face Mount Flat Polycarbonate Door	<b>DK-AFP-21U22</b>
ETN 18RU Face Mount Flat Polycarbonate Door	<b>DK-AFP-18U22</b>

## FLUSH MOUNT DOORS



ETN 44RU Flush Mount Flat Slotted Vents Door	<b>DK-BFV-44U22</b>
ETN 40RU Flush Mount Flat Slotted Vents Door	<b>DK-BFV-40U22</b>
ETN 35RU Flush Mount Flat Slotted Vents Door	<b>DK-BFV-35U22</b>
ETN 27RU Flush Mount Flat Slotted Vents Door	<b>DK-BFV-27U22</b>
ETN 21RU Flush Mount Flat Slotted Vents Door	<b>DK-BFV-21U22</b>
ETN 18RU Flush Mount Flat Slotted Vents Door	<b>DK-BFV-18U22</b>



ETN 44RU Flush Mount Flat Solid Door	<b>DK-BFS-44U22</b>
ETN 40RU Flush Mount Flat Solid Door	<b>DK-BFS-40U22</b>
ETN 35RU Flush Mount Flat Solid Door	<b>DK-BFS-35U22</b>
ETN 27RU Flush Mount Flat Solid Door	<b>DK-BFS-27U22</b>
ETN 21RU Flush Mount Flat Solid Door	<b>DK-BFS-21U22</b>
ETN 18RU Flush Mount Flat Solid Door	<b>DK-BFS-18U22</b>

**ALL DOORS**  
MOUNT ON LEFT  
OR RIGHT SIDE  
AND FEATURE  
SWING HANDLE  
WITH KEYED  
LOCK COMBO HANDLES  
AVAILABLE UPON REQUEST



## RACKS: ETN RACK SERIES ACCESSORIES



TOP PANELS - FAN	# OF FANS	DEPTH	FAN DIA.	CFM	DB/FAN	FAN BTA10
ETN Top Panel with 1 Fan in 20" depth	1	20"	10"	665	52	TP-AFJ-24-20
ETN Top Panel with 1 Fan in 25" depth	1	25"	10"	665	52	TP-AFJ-24-25
	# OF FANS	DEPTH	FAN DIA.	CFM	DB/FAN	FAN BTA4
ETN Top Panel with 4 Fans in 20" depth	4	20"	4"	400	28	TP-AFG-22-20
ETN Top Panel with 4 Fans in 25" depth	4	25"	4"	400	28	TP-AFG-22-25
	# OF FANS	DEPTH	FAN DIA.	CFM	DB/FAN	FAN BTA6
ETN Top Panel with 2 Fans in 20" depth	2	20"	6"	520	55	TP-AFH-22-20
ETN Top Panel with 2 Fans in 25" depth	2	25"	6"	520	55	TP-AFH-22-25

Top Panels feature four cable egress ports (1.5" W x 5" L) in the top of the panel (2 front and 2 rear) for cable entry/exit. Top Panels with fans are 115v/15-amp.



TOP PANELS SOLID	DEPTH	PART #
ETN Top Panel Solid Vent in 20" depth	20"	TP-AFS-22-20
ETN Top Panel Solid Vent in 25" depth	25"	TP-AFS-22-25



TOP PANELS VENTED	DEPTH	PART #
ETN Top Panel Slotted Vent in 20" depth	20"	TP-AFV-22-20
ETN Top Panel Slotted Vent in 25" depth	25"	TP-AFV-22-25

**ALL FANS  
ULTRA QUIET**



FAN STACK W/ FRONT EXHAUST	# OF FANS	DEPTH	FAN DIA.	CFM	DB/FAN	PART #
1RU Fan Stack w/ Exhaust - 2 Ultra Quiet Fans and 8" depth	2	8"	4.75"	120	27	UA-FS1-S8
1RU Fan Stack w/ Exhaust - 2 Ultra Quiet Fans and 14" depth	2	14"	4.75"	120	27	UA-FS1-S14



FAN PANEL - ULTRA QUIET	# OF FANS	RACK HEIGHT	FAN DIA.	CFM	DB/FAN	PART #
2RU Fan Plate w/ 2 Ultra Quiet Fans	2	2RU	3"	50	28	UA-QF2-2
2RU Fan Plate w/ 4 Ultra Quiet Fans	4	2RU	3"	100	28	UA-QF2-4
3RU Fan Plate w/ 2 Ultra Quiet Fans	2	3RU	4.75"	120	27	UA-QF3-2



FAN PANEL W/ DISPLAY	# OF FANS	RACK HEIGHT	FAN DIA.	CFM	DB/FAN	PART #
2RU Ultra Quiet Fan Plate w/ 2 Ultra Quiet Fans and Display	2	2RU	3"	50	28	UA-QFD2-2
2RU Ultra Quiet Fan Plate w/ 4 Ultra Quiet Fans and Display	4	2RU	3"	100	28	UA-QFD2-4
3RU Ultra Quiet Fan Plate w/ 2 Ultra Quiet Fans and Display	2	3RU	4.75"	120	27	UA-QFD3-2



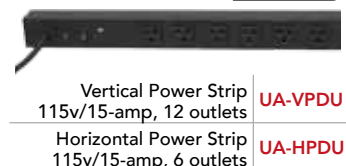
4RU CD Holder | UA-CD4



5RU DVD Holder | UA-DVD5



**12 OUTLETS  
48" LENGTH  
VERTICAL**



**6 OUTLETS  
17" LENGTH  
HORIZONTAL**

Vertical Power Strip 115v/15-amp, 12 outlets | UA-VPDU  
Horizontal Power Strip 115v/15-amp, 6 outlets | UA-HPDU



2RU Solid Drawer **UA-DR2**



2RU Solid Drawer with Lock **UA-DR2-LK**



3RU Lock Box **UA-DR3-LK-FH**

3RU Solid Drawer **UA-DR3**

3RU Solid Drawer with Lock **UA-DR3-LK**

4RU Lock Box **UA-DR4-LK-FH**

4RU Solid Drawer **UA-DR4**

4RU Solid Drawer with Lock **UA-DR4-LK**



2RU Retractable Shelf **UA-SHR2**



1RU Solid Front Face Shelf **UA-SHS1**



1RU Vented Shelf **UA-SH1**

3RU Retractable Shelf **UA-SHR3**

2RU Solid Front Face Shelf **UA-SHS2**

2RU Vented Shelf **UA-SH2**

3RU Vented Shelf **UA-SH3**

4RU Vented Shelf **UA-SH4**

5RU Vented Shelf **UA-SH5**



1RU Vented Shelf w/  
Hold Down Bracket **UA-SH1-KB**



1RU Solid Blanking Panel **UA-BPS1**



1RU Vented Blanking Panel **UA-BPHS1**

2RU Vented Shelf w/  
Hold Down Bracket **UA-SH2-KB**

2RU Solid Blanking Panel **UA-BPS2**

2RU Vented Blanking Panel **UA-BPHS2**

3RU Vented Shelf w/  
Hold Down Bracket **UA-SH3-KB**

3RU Solid Blanking Panel **UA-BPS3**

3RU Vented Blanking Panel **UA-BPHS3**

4RU Vented Shelf w/  
Hold Down Bracket **UA-SH4-KB**

4RU Solid Blanking Panel **UA-BPS4**

4RU Vented Blanking Panel **UA-BPHS4**

5RU Vented Shelf w/  
Hold Down Bracket **UA-SH5-KB**

Solid Blanking Panels serve both form and function, filling out empty rack space and directing air where needed. Vented Blanking Panels allow heat produced by AV components to dissipate while covering any blank space between components.



ETN Fine Floor Casters x4 **CA-C125**



ETN Heavy Duty Casters x4 **CA-C660**



ETN Joining Kit **UA130**





#10-32  
Tapped  
Holes



M6 Square  
Hole



Chassis Guide  
(25" to 36" depth) **CHGA-25-36**

ETN 44RU Tapped Mounting Channels	<b>MCL-T-44RU</b>
ETN 40RU Tapped Mounting Channels	<b>MCL-T-40RU</b>
ETN 35RU Tapped Mounting Channels	<b>MCL-T-35RU</b>
ETN 27RU Tapped Mounting Channels	<b>MCL-T-27RU</b>
ETN 21RU Tapped Mounting Channels	<b>MCL-T-21RU</b>
ETN 18RU Tapped Mounting Channels	<b>MCL-T-18RU</b>

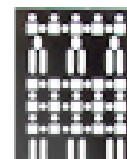
ETN 44RU M6 Square Hole Mounting Channels	<b>MCL-S-44RU</b>
ETN 40RU M6 Square Hole Mounting Channels	<b>MCL-S-40RU</b>
ETN 35RU M6 Square Hole Mounting Channels	<b>MCL-S-35RU</b>
ETN 27RU M6 Square Hole Mounting Channels	<b>MCL-S-27RU</b>
ETN 21RU M6 Square Hole Mounting Channels	<b>MCL-S-21RU</b>
ETN 18RU M6 Square Hole Mounting Channels	<b>MCL-S-18RU</b>



1RU Adjustable Lacing Strip (14" - 21" depth)	<b>UA-LBA-1421</b>
1RU Adjustable Lacing Strip (25" - 37" depth)	<b>UA-LBA-2537</b>



2RU Adjustable Lacing Strip (14" - 21" depth)	<b>UA-LBA-1421-2U</b>
2RU Adjustable Lacing Strip (25" - 37" depth)	<b>UA-LBA-2537-2U</b>



44 RU Vertical Cable Lacing Strip 5" Wide	<b>CLS-44U-5</b>
40 RU Vertical Cable Lacing Strip 5" Wide	<b>CLS-40U-5</b>
37 RU Vertical Cable Lacing Strip 5" Wide	<b>CLS-37U-5</b>
35 RU Vertical Cable Lacing Strip 5" Wide	<b>CLS-35U-5</b>
27 RU Vertical Cable Lacing Strip 5" Wide	<b>CLS-27U-5</b>
24 RU Vertical Cable Lacing Strip 5" Wide	<b>CLS-24U-5</b>
21 RU Vertical Cable Lacing Strip 5" Wide	<b>CLS-21U-5</b>
18 RU Vertical Cable Lacing Strip 5" Wide	<b>CLS-18U-5</b>

**CABLE LACING STRIPS**  
MOUNT TO THE REAR  
OF THE RACK AND  
SERVE AS TIE DOWN  
POINTS FOR CABLING



Lacing Bar Round **UA-LBR2**



Lacing Bar "C" Style  
**UA-LB2  
UA-LB4  
UA-LB6**



Lacing Bar Straight Style **UA-LB3**



Round  
Style



"C" Style



Straight  
Style

# BTN RACK SERIES



- Perfect for grouping together while still maintaining the look of a single rack
- Fully welded standard width open rack, removable side panels optional
- Two pair of adjustable mounting channels with #10-32 tapped holes
- Includes caster base with grounding studs & leg levelers





# BTN SERIES

- Perfect for grouping together while still maintaining the look of a single rack
- Fully welded standard width open rack, removable side panels optional
- Two pair of adjustable mounting channels with #10-32 tapped holes
- Includes caster base with grounding studs & leg levelers

The BTN Series features open sides for easy access to AV equipment. This fully welded rack incorporates a heavy duty caster base for stability and mobility, 2 grounding studs and two removable rear plates at top and base for electrical wiring. The BTN Series has been tested to a static load rating of 12,250 lbs., ensuring the security of your AV components. Two pair of fully adjustable mounting channels, featuring marked RU heights, make equipment installation quick and easy. Racks are available in four different heights and depths, all featuring a black textured powder coat finish unless otherwise specified at time of order placement. These racks can be used as standalone racks or joined together.



CASTER BASE WITH GROUNDING STUDS & LEG LEVELERS INCLUDED

BTN 44RU RACK FRAME	82.75" Height	26.5" Depth	<b>R-BTN-44U22-265</b>
BTN 40RU RACK FRAME	75.75" Height	26.5" Depth	<b>R-BTN-40U22-265</b>
BTN 37RU RACK FRAME	70.5" Height	26.5" Depth	<b>R-BTN-37U22-265</b>
BTN 24RU RACK FRAME	44.75" Height	26.5" Depth	<b>R-BTN-24U22-265</b>
BTN 44RU RACK FRAME	82.75" Height	31.5" Depth	<b>R-BTN-44U22-315</b>
BTN 40RU RACK FRAME	75.75" Height	31.5" Depth	<b>R-BTN-40U22-315</b>
BTN 37RU RACK FRAME	70.5" Height	31.5" Depth	<b>R-BTN-37U22-315</b>
BTN 24RU RACK FRAME	44.75" Height	31.5" Depth	<b>R-BTN-24U22-315</b>
BTN 44RU RACK FRAME	82.75" Height	36" Depth	<b>R-BTN-44U22-36</b>
BTN 40RU RACK FRAME	75.75" Height	36" Depth	<b>R-BTN-40U22-36</b>
BTN 37RU RACK FRAME	70.5" Height	36" Depth	<b>R-BTN-37U22-36</b>
BTN 24RU RACK FRAME	44.75" Height	36" Depth	<b>R-BTN-24U22-36</b>
BTN 44RU RACK FRAME	82.75" Height	42" Depth	<b>R-BTN-44U22-42</b>
BTN 40RU RACK FRAME	75.75" Height	42" Depth	<b>R-BTN-40U22-42</b>
BTN 37RU RACK FRAME	70.5" Height	42" Depth	<b>R-BTN-37U22-42</b>
BTN 24RU RACK FRAME	44.75" Height	42" Depth	<b>R-BTN-24U22-42</b>

## FACE MOUNT DOORS



**ALL DOORS**  
MOUNT ON LEFT  
OR RIGHT SIDE  
AND FEATURE  
SWING HANDLE  
WITH KEYED  
LOCK COMBO HANDLES  
AVAILABLE UPON REQUEST



BTN 44RU Face Mount Flat Solid Door	<b>DK-AFS-44U22</b>
BTN 40RU Face Mount Flat Solid Door	<b>DK-AFS-40U22</b>
BTN 35RU Face Mount Flat Solid Door	<b>DK-AFS-35U22</b>
BTN 27RU Face Mount Flat Solid Door	<b>DK-AFS-27U22Z</b>
BTN 21RU Face Mount Flat Solid Door	<b>DK-AFS-21U22</b>
BTN 18RU Face Mount Flat Solid Door	<b>DK-AFS-18U22</b>

BTN 44RU Face Mount Flat Screen Door	<b>DK-AFZ-44U22</b>
BTN 40RU Face Mount Flat Screen Door	<b>DK-AFZ-40U22</b>
BTN 35RU Face Mount Flat Screen Door	<b>DK-AFZ-35U22</b>
BTN 27RU Face Mount Flat Screen Door	<b>DK-AFZ-27U22Z</b>
BTN 21RU Face Mount Flat Screen Door	<b>DK-AFZ-21U22</b>
BTN 18RU Face Mount Flat Screen Door	<b>DK-AFZ-18U22</b>

BTN 44RU Face Mount Flat Polycarbonate Door	<b>DK-AFP-44U22</b>
BTN 40RU Face Mount Flat Polycarbonate Door	<b>DK-AFP-40U22</b>
BTN 35RU Face Mount Flat Polycarbonate Door	<b>DK-AFP-35U22</b>
BTN 27RU Face Mount Flat Polycarbonate Door	<b>DK-AFP-27U22</b>
BTN 21RU Face Mount Flat Polycarbonate Door	<b>DK-AFP-21U22</b>
BTN 18RU Face Mount Flat Polycarbonate Door	<b>DK-AFP-18U22</b>

## FLUSH MOUNT DOORS



BTN 44RU Flush Mount Flat Slotted Vents Door	<b>DK-BFV-44U22</b>
BTN 40RU Flush Mount Flat Slotted Vents Door	<b>DK-BFV-40U22</b>
BTN 35RU Flush Mount Flat Slotted Vents Door	<b>DK-BFV-35U22</b>
BTN 27RU Flush Mount Flat Slotted Vents Door	<b>DK-BFV-27U22</b>
BTN 21RU Flush Mount Flat Slotted Vents Door	<b>DK-BFV-21U22</b>
BTN 18RU Flush Mount Flat Slotted Vents Door	<b>DK-BFV-18U22</b>

BTN 44RU Flush Mount Flat Solid Door	<b>DK-BFS-44U22</b>
BTN 40RU Flush Mount Flat Solid Door	<b>DK-BFS-40U22</b>
BTN 35RU Flush Mount Flat Solid Door	<b>DK-BFS-35U22</b>
BTN 27RU Flush Mount Flat Solid Door	<b>DK-BFS-27U22</b>
BTN 21RU Flush Mount Flat Solid Door	<b>DK-BFS-21U22</b>
BTN 18RU Flush Mount Flat Solid Door	<b>DK-BFS-18U22</b>

## VENTED SIDE PANELS



BTN 44RU Vented w/ Lock and 26.5" depth Side Panel	<b>SPK-AFV-44U-275</b>
BTN 40RU Vented w/ Lock and 26.5" depth Side Panel	<b>SPK-AFV-40U-275</b>
BTN 37RU Vented w/ Lock and 26.5" depth Side Panel	<b>SPK-AFV-37U-275</b>
BTN 24RU Vented w/ Lock and 26.5" depth Side Panel	<b>SPK-AFV-24U-275</b>
BTN 44RU Vented w/ Lock and 31.5" depth Side Panel	<b>SPK-AFV-44U-325</b>
BTN 40RU Vented w/ Lock and 31.5" depth Side Panel	<b>SPK-AFV-40U-325</b>
BTN 37RU Vented w/ Lock and 31.5" depth Side Panel	<b>SPK-AFV-37U-325</b>
BTN 24RU Vented w/ Lock and 31.5" depth Side Panel	<b>SPK-AFV-24U-325</b>





Top Panels feature four cable egress ports (1.5" W x 5" L) in the top of the panel (2 front and 2 rear) for cable entry/exit. Top Panels with fans are 115v/15-amp.

TOP PANELS - 1 FAN	# OF FANS	DEPTH	FAN DIA.	CFM	DB/FAN	FAN BTA10
BTN Top Panel with 1 Fan in 26.5" depth	1	26.5"	10"	665	52	<a href="#">TP-AFJ-22-265</a>
BTN Top Panel with 1 Fan in 31.5" depth	1	31.5"	10"	665	52	<a href="#">TP-AFJ-22-315</a>
BTN Top Panel with 1 Fan in 36" depth	1	36"	10"	665	52	<a href="#">TP-AFJ-22-36</a>
BTN Top Panel with 1 Fan in 42" depth	1	42"	10"	665	52	<a href="#">TP-AFJ-22-42</a>

TOP PANELS - 4 FANS	# OF FANS	DEPTH	FAN DIA.	CFM	DB/FAN	FAN BTA4
BTN Top Panel with 1 Fan in 26.5" depth	4	26.5"	4"	400	28	<a href="#">TP-AFG-22-265</a>
BTN Top Panel with 1 Fan in 31.5" depth	4	31.5"	4"	400	28	<a href="#">TP-AFG-22-315</a>
BTN Top Panel with 1 Fan in 36" depth	4	36"	4"	400	28	<a href="#">TP-AFG-22-36</a>
BTN Top Panel with 1 Fan in 42" depth	4	42"	4"	400	28	<a href="#">TP-AFG-22-42</a>

TOP PANELS - 2 FANS	# OF FANS	DEPTH	FAN DIA.	CFM	DB/FAN	FAN BTA6
BTN Top Panel with 1 Fan in 26.5" depth	2	26.5"	6"	520	55	<a href="#">TP-AFH-22-265</a>
BTN Top Panel with 1 Fan in 31.5" depth	2	31.5"	6"	520	55	<a href="#">TP-AFH-22-315</a>
BTN Top Panel with 1 Fan in 36" depth	2	36"	6"	520	55	<a href="#">TP-AFH-22-36</a>
BTN Top Panel with 1 Fan in 42" depth	2	42"	6"	520	55	<a href="#">TP-AFH-22-342</a>



TOP PANELS SOLID	DEPTH	PART #
BTN Top Solid Panel	27.5"	<a href="#">TP-AFS-22-275</a>
BTN Top Solid Panel	31.5"	<a href="#">TP-AFS-22-315</a>
BTN Top Solid Panel	36"	<a href="#">TP-AFS-22-36</a>
BTN Top Solid Panel	42"	<a href="#">TP-AFS-24-42</a>



TOP PANELS VENTED	DEPTH	PART #
BTN Top Vented Panel	27.5"	<a href="#">TP-AFV-22-275</a>
BTN Top Vented Panel	31.5"	<a href="#">TP-AFV-22-315</a>
BTN Top Vented Panel	36"	<a href="#">TP-AFV-22-36</a>
BTN Top Vented Panel	42"	<a href="#">TP-AFV-22-42</a>

**ALL FANS  
ULTRA QUIET**



FAN STACK W/ FRONT EXHAUST	# OF FANS	DEPTH	FAN DIA.	CFM	DB/FAN	PART #
1RU Fan Stack w/ Exhaust - 2 Ultra Quiet Fans and 8" depth	2	8"	4.75"	120	27	<a href="#">UA-FS1-S8</a>
1RU Fan Stack w/ Exhaust - 2 Ultra Quiet Fans and 14" depth	2	14"	4.75"	120	27	<a href="#">UA-FS1-S14</a>



FAN PANEL - ULTRA QUIET	# OF FANS	RACK HEIGHT	FAN DIA.	CFM	DB/FAN	PART #
2RU Fan Plate w/ 2 Ultra Quiet Fans	2	2RU	3"	50	28	<a href="#">UA-QF2-2</a>
2RU Fan Plate w/ 4 Ultra Quiet Fans	4	2RU	3"	100	28	<a href="#">UA-QF2-4</a>
3RU Fan Plate w/ 2 Ultra Quiet Fans	2	3RU	4.75"	120	27	<a href="#">UA-QF3-2</a>



FAN PANEL W/ DISPLAY	# OF FANS	RACK HEIGHT	FAN DIA.	CFM	DB/FAN	PART #
2RU Ultra Quiet Fan Plate w/ 2 Ultra Quiet Fans and Display	2	2RU	3"	50	28	<a href="#">UA-QFD2-2</a>
2RU Ultra Quiet Fan Plate w/ 4 Ultra Quiet Fans and Display	4	2RU	3"	100	28	<a href="#">UA-QFD2-4</a>
3RU Ultra Quiet Fan Plate w/ 2 Ultra Quiet Fans and Display	2	3RU	4.75"	120	27	<a href="#">UA-QFD3-2</a>



4RU CD Holder [UA-CD4](#)



5RU DVD Holder [UA-DVD5](#)

**12 OUTLETS  
48" LENGTH  
VERTICAL**

**6 OUTLETS  
17" LENGTH  
HORIZONTAL**



Vertical Power Strip  
115v/15-amp, 12 outlets [UA-VPDU](#)  
Horizontal Power Strip  
115v/15-amp, 6 outlets [UA-HPDU](#)



2RU Solid Drawer	<b>UA-DR2</b>
3RU Solid Drawer	<b>UA-DR3</b>
4RU Solid Drawer	<b>UA-DR4</b>



2RU Solid Drawer with Lock	<b>UA-DR2-LK</b>
3RU Solid Drawer with Lock	<b>UA-DR3-LK</b>
4RU Solid Drawer with Lock	<b>UA-DR4-LK</b>



3RU Lock Box	<b>UA-DR3-LK-FH</b>
4RU Lock Box	<b>UA-DR4-LK-FH</b>



2RU Retractable Shelf	<b>UA-SHR2</b>
3RU Retractable Shelf	<b>UA-SHR3</b>



1RU Solid Front Face Shelf	<b>UA-SHS1</b>
2RU Solid Front Face Shelf	<b>UA-SHS2</b>



1RU Vented Shelf	<b>UA-SH1</b>
2RU Vented Shelf	<b>UA-SH2</b>
3RU Vented Shelf	<b>UA-SH3</b>
4RU Vented Shelf	<b>UA-SH4</b>
5RU Vented Shelf	<b>UA-SH5</b>



1RU Vented Shelf w/ Hold Down Bracket	<b>UA-SH1-KB</b>
2RU Vented Shelf w/ Hold Down Bracket	<b>UA-SH2-KB</b>
3RU Vented Shelf w/ Hold Down Bracket	<b>UA-SH3-KB</b>
4RU Vented Shelf w/ Hold Down Bracket	<b>UA-SH4-KB</b>
5RU Vented Shelf w/ Hold Down Bracket	<b>UA-SH5-KB</b>



1RU Solid Blanking Panel	<b>UA-BPS1</b>
2RU Solid Blanking Panel	<b>UA-BPS2</b>
3RU Solid Blanking Panel	<b>UA-BPS3</b>
4RU Solid Blanking Panel	<b>UA-BPS4</b>



1RU Vented Blanking Panel	<b>UA-BPHS1</b>
2RU Vented Blanking Panel	<b>UA-BPHS2</b>
3RU Vented Blanking Panel	<b>UA-BPHS3</b>
4RU Vented Blanking Panel	<b>UA-BPHS4</b>

Solid Blanking Panels serve both form and function, filling out empty rack space and directing air where needed. Vented Blanking Panels allow heat produced by AV components to dissipate while covering any blank space between components.



BTN Fine Floor Casters x4	<b>CA-C125</b>
---------------------------	----------------



BTN Heavy Duty Casters x4	<b>CA-C660</b>
---------------------------	----------------



BTN Joining Kit	<b>UA130</b>
-----------------	--------------



## RACKS: BTN RACK SERIES ACCESSORIES



#10-32  
Tapped  
Holes



M6 Square  
Hole



Chassis Guide  
(25" to 36" depth) **CHGA-25-36**

BTN 44RU Tapped Mounting Channels	<b>MCL-T-44RU</b>
BTN 40RU Tapped Mounting Channels	<b>MCL-T-40RU</b>
BTN 35RU Tapped Mounting Channels	<b>MCL-T-35RU</b>
BTN 27RU Tapped Mounting Channels	<b>MCL-T-27RU</b>
BTN 21RU Tapped Mounting Channels	<b>MCL-T-21RU</b>
BTN 18RU Tapped Mounting Channels	<b>MCL-T-18RU</b>

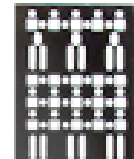
BTN 44RU M6 Square Hole Mounting Channels	<b>MCL-S-44RU</b>
BTN 40RU M6 Square Hole Mounting Channels	<b>MCL-S-40RU</b>
BTN 35RU M6 Square Hole Mounting Channels	<b>MCL-S-35RU</b>
BTN 27RU M6 Square Hole Mounting Channels	<b>MCL-S-27RU</b>
BTN 21RU M6 Square Hole Mounting Channels	<b>MCL-S-21RU</b>
BTN 18RU M6 Square Hole Mounting Channels	<b>MCL-S-18RU</b>



1RU Adjustable Lacing Strip (14" - 21" depth)	<b>UA-LBA-1421</b>
1RU Adjustable Lacing Strip (25" - 37" depth)	<b>UA-LBA-2537</b>



2RU Adjustable Lacing Strip (14" - 21" depth)	<b>UA-LBA-1421-2U</b>
2RU Adjustable Lacing Strip (25" - 37" depth)	<b>UA-LBA-2537-2U</b>



44 RU Vertical Cable Lacing Strip 5" Wide	<b>CLS-44U-5</b>
40 RU Vertical Cable Lacing Strip 5" Wide	<b>CLS-40U-5</b>
37 RU Vertical Cable Lacing Strip 5" Wide	<b>CLS-37U-5</b>
35 RU Vertical Cable Lacing Strip 5" Wide	<b>CLS-35U-5</b>
27 RU Vertical Cable Lacing Strip 5" Wide	<b>CLS-27U-5</b>
24 RU Vertical Cable Lacing Strip 5" Wide	<b>CLS-24U-5</b>
21 RU Vertical Cable Lacing Strip 5" Wide	<b>CLS-21U-5</b>
18 RU Vertical Cable Lacing Strip 5" Wide	<b>CLS-18U-5</b>

**CABLE LACING STRIPS**  
MOUNT TO THE REAR  
OF THE RACK AND  
SERVE AS TIE DOWN  
POINTS FOR CABLING



Lacing Bar Round **UA-LBR2**



Lacing Bar "C" Style  
**UA-LB2  
UA-LB4  
UA-LB6**



Lacing Bar Straight Style **UA-LB3**



Round  
Style



"C" Style



Straight  
Style

# PTN RACK SERIES



- 24" frame width, optimal for larger cabling requirements
- Fully welded open rack with a wider cabinet, removable side panels optional
- Two pair of adjustable mounting channels with #10-32 tapped holes
- Includes castor base with grounding studs & leg levelers





CASTER BASE WITH GROUNDING STUDS &amp; LEG LEVELERS INCLUDED

# PTN SERIES

- 24" frame width, optimal for larger cabling requirements
- Fully welded open rack with a wider cabinet, removable side panels optional
- Two pair of adjustable mounting channels with #10-32 tapped holes
- Includes caster base with grounding studs & leg levelers

The PTN Series has a 24" frame width and is the optimal rack for larger cabling requirements. This fully welded rack incorporates wider main channels, 2 grounding studs and a heavy duty caster base as part of its robust design. Two removable rear plates at top and base are incorporated into the rack for electrical wiring. The PTN Series has been tested to a static load rating of 12,250 lbs., ensuring the security of your AV components. Two pair of fully adjustable mounting channels are included and feature marked RU heights for fast and easy equipment installation. PTN racks are available in four different heights and two depths, all featuring a black textured powder coat finish unless otherwise specified at time of order placement. These racks can be used as standalone racks or joined together.

PTN 44RU RACK FRAME	82.75" Height	27.5" Depth	<b>R-PTN-44U24-275</b>
PTN 40RU RACK FRAME	75.75" Height	27.5" Depth	<b>R-PTN-40U24-275</b>
PTN 37RU RACK FRAME	70.5" Height	27.5" Depth	<b>R-PTN-37U24-275</b>
PTN 24RU RACK FRAME	44.75" Height	27.5" Depth	<b>R-PTN-24U24-275</b>
PTN 44RU RACK FRAME	82.75" Height	32.5" Depth	<b>R-PTN-44U24-325</b>
PTN 40RU RACK FRAME	75.75" Height	32.5" Depth	<b>R-PTN-40U24-325</b>
PTN 37RU RACK FRAME	70.5" Height	32.5" Depth	<b>R-PTN-37U24-325</b>
PTN 24RU RACK FRAME	44.75" Height	32.5" Depth	<b>R-PTN-24U24-325</b>





## FACE MOUNT DOORS



**ALL DOORS**  
MOUNT ON LEFT  
OR RIGHT SIDE  
AND FEATURE  
SWING HANDLE  
WITH KEYED  
LOCK COMBO HANDLES  
AVAILABLE UPON REQUEST



PTN 44RU Face Mount Flat Solid Door	<b>DK-AFS-44U22</b>
PTN 40RU Face Mount Flat Solid Door	<b>DK-AFS-40U22</b>
PTN 35RU Face Mount Flat Solid Door	<b>DK-AFS-35U22</b>
PTN 27RU Face Mount Flat Solid Door	<b>DK-AFS-27U22Z</b>
PTN 21RU Face Mount Flat Solid Door	<b>DK-AFS-21U22</b>
PTN 18RU Face Mount Flat Solid Door	<b>DK-AFS-18U22</b>

PTN 44RU Face Mount Flat Screen Door	<b>DK-AFZ-44U22</b>
PTN 40RU Face Mount Flat Screen Door	<b>DK-AFZ-40U22</b>
PTN 35RU Face Mount Flat Screen Door	<b>DK-AFZ-35U22</b>
PTN 27RU Face Mount Flat Screen Door	<b>DK-AFZ-27U22Z</b>
PTN 21RU Face Mount Flat Screen Door	<b>DK-AFZ-21U22</b>
PTN 18RU Face Mount Flat Screen Door	<b>DK-AFZ-18U22</b>

PTN 44RU Face Mount Flat Polycarbonate Door	<b>DK-AFP-44U22</b>
PTN 40RU Face Mount Flat Polycarbonate Door	<b>DK-AFP-40U22</b>
PTN 35RU Face Mount Flat Polycarbonate Door	<b>DK-AFP-35U22</b>
PTN 27RU Face Mount Flat Polycarbonate Door	<b>DK-AFP-27U22</b>
PTN 21RU Face Mount Flat Polycarbonate Door	<b>DK-AFP-21U22</b>
PTN 18RU Face Mount Flat Polycarbonate Door	<b>DK-AFP-18U22</b>

## FLUSH MOUNT DOORS



PTN 44RU Flush Mount Flat Slotted Vents Door	<b>DK-BFV-44U22</b>
PTN 40RU Flush Mount Flat Slotted Vents Door	<b>DK-BFV-40U22</b>
PTN 35RU Flush Mount Flat Slotted Vents Door	<b>DK-BFV-35U22</b>
PTN 27RU Flush Mount Flat Slotted Vents Door	<b>DK-BFV-27U22</b>
PTN 21RU Flush Mount Flat Slotted Vents Door	<b>DK-BFV-21U22</b>
PTN 18RU Flush Mount Flat Slotted Vents Door	<b>DK-BFV-18U22</b>

PTN 44RU Flush Mount Flat Solid Door	<b>DK-BFS-44U22</b>
PTN 40RU Flush Mount Flat Solid Door	<b>DK-BFS-40U22</b>
PTN 35RU Flush Mount Flat Solid Door	<b>DK-BFS-35U22</b>
PTN 27RU Flush Mount Flat Solid Door	<b>DK-BFS-27U22</b>
PTN 21RU Flush Mount Flat Solid Door	<b>DK-BFS-21U22</b>
PTN 18RU Flush Mount Flat Solid Door	<b>DK-BFS-18U22</b>

## VENTED SIDE PANELS



PTN 44RU Vented w/ Lock and 26.5" depth Side Panel	<b>SPK-AFV-44U-275</b>
PTN 40RU Vented w/ Lock and 26.5" depth Side Panel	<b>SPK-AFV-40U-275</b>
PTN 37RU Vented w/ Lock and 26.5" depth Side Panel	<b>SPK-AFV-37U-275</b>
PTN 24RU Vented w/ Lock and 26.5" depth Side Panel	<b>SPK-AFV-24U-275</b>
PTN 44RU Vented w/ Lock and 31.5" depth Side Panel	<b>SPK-AFV-44U-325</b>
PTN 40RU Vented w/ Lock and 31.5" depth Side Panel	<b>SPK-AFV-40U-325</b>
PTN 37RU Vented w/ Lock and 31.5" depth Side Panel	<b>SPK-AFV-37U-325</b>
PTN 24RU Vented w/ Lock and 31.5" depth Side Panel	<b>SPK-AFV-24U-325</b>



TOP PANELS - 1 FAN	# OF FANS	DEPTH	FAN DIA.	CFM	DB/FAN	FAN BTA10
PTN Top Panel with 1 Fan in 27.5" depth	1	27.5"	10"	665	52	<a href="#">TP-AFJ-24-275</a>
ETN Top Panel with 1 Fan in 32.5" depth	1	32.5"	10"	665	52	<a href="#">TP-AFJ-24-325</a>

TOP PANELS - 4 FANS	# OF FANS	DEPTH	FAN DIA.	CFM	DB/FAN	FAN BTA4
PTN Top Panel with 4 Fans in 27.5" depth	4	27.5"	4"	400	28	<a href="#">TP-AFG-24-275</a>
PTN Top Panel with 4 Fans in 32.5" depth	4	32.5"	4"	400	28	<a href="#">TP-AFG-24-325</a>

TOP PANELS - 2 FANS	# OF FANS	DEPTH	FAN DIA.	CFM	DB/FAN	FAN BTA6
PTN Top Panel with 2 Fans in 27.5" depth	2	27.5"	6"	520	55	<a href="#">TP-AFH-24-275</a>
PTN Top Panel with 2 Fans in 32.5" depth	2	32.5"	6"	520	55	<a href="#">TP-AFH-24-325</a>

Top Panels feature four cable egress ports (1.5" W x 5" L) in the top of the panel (2 front and 2 rear) for cable entry/exit. Top Panels with fans are 115v/15-amp.



TOP PANELS SOLID	DEPTH	PART #
PTN Top Panel Solid Vent in 27.5" depth	27.5"	<a href="#">TP-AFS-24-275</a>
PTN Top Panel Solid Vent in 32.5" depth	32.5"	<a href="#">TP-AFS-24-325</a>



TOP PANELS VENTED	DEPTH	PART #
PTN Top Panel Slotted Vent in 27.5" depth	27.5"	<a href="#">TP-AFV-24-275</a>
PTN Top Panel Slotted Vent in 32.5" depth	32.5"	<a href="#">TP-AFV-24-325</a>

**ALL FANS  
UTRAL QUIET**



FAN STACK W/ FRONT EXHAUST	# OF FANS	DEPTH	FAN DIA.	CFM	DB/FAN	PART #
1RU Fan Stack w/ Exhaust - 2 Ultra Quiet Fans and 8" depth	2	8"	4.75"	120	27	<a href="#">UA-FS1-S8</a>
1RU Fan Stack w/ Exhaust - 2 Ultra Quiet Fans and 14" depth	2	14"	4.75"	120	27	<a href="#">UA-FS1-S14</a>



FAN PANEL - ULTRA QUIET	# OF FANS	RACK HEIGHT	FAN DIA.	CFM	DB/FAN	PART #
2RU Fan Plate w/ 2 Ultra Quiet Fans	2	2RU	3"	50	28	<a href="#">UA-QF2-2</a>
2RU Fan Plate w/ 4 Ultra Quiet Fans	4	2RU	3"	100	28	<a href="#">UA-QF2-4</a>
3RU Fan Plate w/ 2 Ultra Quiet Fans	2	3RU	4.75"	120	27	<a href="#">UA-QF3-2</a>



FAN PANEL W/ DISPLAY	# OF FANS	RACK HEIGHT	FAN DIA.	CFM	DB/FAN	PART #
2RU Ultra Quiet Fan Plate w/ 2 Ultra Quiet Fans and Display	2	2RU	3"	50	28	<a href="#">UA-QFD2-2</a>
2RU Ultra Quiet Fan Plate w/ 4 Ultra Quiet Fans and Display	4	2RU	3"	100	28	<a href="#">UA-QFD2-4</a>
3RU Ultra Quiet Fan Plate w/ 2 Ultra Quiet Fans and Display	2	3RU	4.75"	120	27	<a href="#">UA-QFD3-2</a>



4RU CD Holder [UA-CD4](#)



5RU DVD Holder [UA-DVD5](#)



**12 OUTLETS**  
48" LENGTH  
VERTICAL



**6 OUTLETS**  
17" LENGTH  
HORIZONTAL

Vertical Power Strip 115v/15-amp, 12 outlets [UA-VPDU](#)  
Horizontal Power Strip 115v/15-amp, 6 outlets [UA-HPDU](#)



2RU Solid Drawer **UA-DR2**

3RU Solid Drawer **UA-DR3**

4RU Solid Drawer **UA-DR4**



2RU Solid Drawer with Lock **UA-DR2-LK**

3RU Solid Drawer with Lock **UA-DR3-LK**

4RU Solid Drawer with Lock **UA-DR4-LK**



3RU Lock Box **UA-DR3-LK-FH**

4RU Lock Box **UA-DR4-LK-FH**



2RU Retractable Shelf **UA-SHR2**

3RU Retractable Shelf **UA-SHR3**



1RU Solid Front Face Shelf **UA-SHS1**

2RU Solid Front Face Shelf **UA-SHS2**



1RU Vented Shelf **UA-SH1**

2RU Vented Shelf **UA-SH2**

3RU Vented Shelf **UA-SH3**

4RU Vented Shelf **UA-SH4**

5RU Vented Shelf **UA-SH5**



1RU Vented Shelf w/  
Hold Down Bracket **UA-SH1-KB**

2RU Vented Shelf w/  
Hold Down Bracket **UA-SH2-KB**

3RU Vented Shelf w/  
Hold Down Bracket **UA-SH3-KB**

4RU Vented Shelf w/  
Hold Down Bracket **UA-SH4-KB**

5RU Vented Shelf w/  
Hold Down Bracket **UA-SH5-KB**



1RU Solid Blanking Panel **UA-BPS1**

2RU Solid Blanking Panel **UA-BPS2**

3RU Solid Blanking Panel **UA-BPS3**

4RU Solid Blanking Panel **UA-BPS4**



1RU Vented Blanking Panel **UA-BPHS1**

2RU Vented Blanking Panel **UA-BPHS2**

3RU Vented Blanking Panel **UA-BPHS3**

4RU Vented Blanking Panel **UA-BPHS4**



PTN Fine Floor Casters x4 **CA-C125**



PTN Heavy Duty Casters x4 **CA-C660**



PTN Joining Kit **UA130**





#10-32  
Tapped  
Holes



M6 Square  
Hole



Chassis Guide  
(25" to 36" depth) **CHGA-25-36**

PTN 44RU Tapped Mounting Channels	<b>MCL-PTN-T-44RU</b>
PTN 40RU Tapped Mounting Channels	<b>MCL-PTN-T-40RU</b>
PTN 35RU Tapped Mounting Channels	<b>MCL-PTN-T-35RU</b>
PTN 27RU Tapped Mounting Channels	<b>MCL-PTN-T-27RU</b>
PTN 21RU Tapped Mounting Channels	<b>MCL-PTN-T-21RU</b>
PTN 18RU Tapped Mounting Channels	<b>MCL-PTN-T-18RU</b>

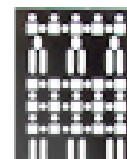
PTN 44RU M6 Square Hole Mounting Channels	<b>MCL-PTN-S-44RU</b>
PTN 40RU M6 Square Hole Mounting Channels	<b>MCL-PTN-S-40RU</b>
PTN 35RU M6 Square Hole Mounting Channels	<b>MCL-PTN-S-35RU</b>
PTN 27RU M6 Square Hole Mounting Channels	<b>MCL-PTN-S-27RU</b>
PTN 21RU M6 Square Hole Mounting Channels	<b>MCL-PTN-S-21RU</b>
PTN 18RU M6 Square Hole Mounting Channels	<b>MCL-PTN-S-18RU</b>



1RU Adjustable Lacing Strip (14" - 21" depth)	<b>UA-LBA-1421</b>
1RU Adjustable Lacing Strip (25" - 37" depth)	<b>UA-LBA-2537</b>



2RU Adjustable Lacing Strip (14" - 21" depth)	<b>UA-LBA-1421-2U</b>
2RU Adjustable Lacing Strip (25" - 37" depth)	<b>UA-LBA-2537-2U</b>



44 RU Vertical Cable Lacing Strip 5" Wide	<b>CLS-44U-5</b>
40 RU Vertical Cable Lacing Strip 5" Wide	<b>CLS-40U-5</b>
37 RU Vertical Cable Lacing Strip 5" Wide	<b>CLS-37U-5</b>
35 RU Vertical Cable Lacing Strip 5" Wide	<b>CLS-35U-5</b>
27 RU Vertical Cable Lacing Strip 5" Wide	<b>CLS-27U-5</b>
24 RU Vertical Cable Lacing Strip 5" Wide	<b>CLS-24U-5</b>
21 RU Vertical Cable Lacing Strip 5" Wide	<b>CLS-21U-5</b>
18 RU Vertical Cable Lacing Strip 5" Wide	<b>CLS-18U-5</b>

**CABLE LACING STRIPS**  
MOUNT TO THE REAR  
OF THE RACK AND  
SERVE AS TIE DOWN  
POINTS FOR CABLING



Lacing Bar Round **UA-LBR2**



Lacing Bar "C" Style  
**UA-LB2  
UA-LB4  
UA-LB6**



Lacing Bar Straight Style **UA-LB3**



Round  
Style



"C" Style



Straight  
Style

# SNAPRAX RACK SERIES

- Assembles on-site in less than 3 minutes
- Includes caster base and casters
- Ships in individual boxes to maneuver through small spaces, tight hallways and narrow stairwells



# SNAPRAX SERIES

- Assembles on-site in less than 3 minutes
- Includes caster base & casters
- Ships in individual boxes to maneuver through small spaces, tight hallways and narrow stairwells

This rack was designed to provide safe and secure mounting for all AV equipment while saving the installer valuable time at every job site. This versatile rack system offers six different heights and two different depth options, along with a wide assortment of accessories that allow you to mount your AV components and keep them performing at their best.

SnapRax ships unassembled in smaller packages which makes it ideal for maneuvering into smaller spaces. The open-frame design provides stability and makes assembly a snap in under 3 minutes. Shelves and other components can be added in minutes with the help of silk-screened RU markings. SnapRax has a UL tested load rating of 600 lbs. and offers cooling and power strip options to adapt to the evolving AV environment.



## ALL SNAPRAX FRAMES INCLUDE:

- Self-squaring top and base sections
- Four main rails
- Center channels
- Caster base and casters
- Cable egress with grommets
- Leveler brake
- Mounting hardware



SNAPRAX 43RU RACK KIT	75.25" Height	20" Depth	<b>SR43</b>
SNAPRAX 37RU RACK KIT	64.75" Height	20" Depth	<b>SR37</b>
SNAPRAX 29RU RACK KIT	50.75" Height	20" Depth	<b>SR29</b>
SNAPRAX 21RU RACK KIT	36.75" Height	20" Depth	<b>SR21</b>
SNAPRAX 14RU RACK KIT	24.5" Height	20" Depth	<b>SR14</b>
SNAPRAX 8RU RACK KIT	14" Height	20" Depth	<b>SR8</b>
SNAPRAX 43RU RACK KIT	75.25" Height	26" Depth	<b>SR43-26</b>
SNAPRAX 37RU RACK KIT	64.75" Height	26" Depth	<b>SR37-26</b>
SNAPRAX 29RU RACK KIT	50.75" Height	26" Depth	<b>SR29-26</b>
SNAPRAX 21RU RACK KIT	36.75" Height	26" Depth	<b>SR21-26</b>
SNAPRAX 14RU RACK KIT	24.5" Height	26" Depth	<b>SR14-26</b>
SNAPRAX 8RU RACK KIT	14" Height	26" Depth	<b>SR8-26</b>



**ASSEMBLES  
IN LESS THAN  
3 MINUTES!**



See the video at [www.LibAV.com](http://www.LibAV.com)



## FACE MOUNT FLAT DOORS



**ALL DOORS**  
MOUNT ON LEFT  
OR RIGHT SIDE  
AND FEATURE  
SWING HANDLE  
WITH KEYED  
LOCK COMBO HANDLES  
AVAILABLE UPON REQUEST



SnapRax 43RU Solid Flat Door	<b>SR43-DSF</b>
SnapRax 37RU Solid Flat Door	<b>SR37-DSF</b>
SnapRax 29RU Solid FlatDoor	<b>SR29-DSF</b>
SnapRax 21RU Solid FlatDoor	<b>SR21-DSF</b>
SnapRax 14RU Solid FlatDoor	<b>SR14-DSF</b>
SnapRax 8U Solid Flat Door	<b>SR8-DSF</b>

SnapRax 43RU Polycarbonate Flat Door	<b>SR43-DPF</b>
SnapRax 37RU Polycarbonate Flat Door	<b>SR37-DPF</b>
SnapRax 29RU Polycarbonate Flat Door	<b>SR29-DPF</b>
SnapRax 21RU Polycarbonate Flat Door	<b>SR21-DPF</b>
SnapRax 14RU Polycarbonate Flat Door	<b>SR14-DPF</b>
SnapRax 8RU Polycarbonate Flat Door	<b>SR8-DPF</b>

SnapRax 43RU Vented Flat Door	<b>SR43-DVF</b>
SnapRax 37RU Vented Flat Door	<b>SR37-DVF</b>
SnapRax 29RU Vented Flat Door	<b>SR29-DVF</b>
SnapRax 21RU Vented Flat Door	<b>SR21-DVF</b>
SnapRax 14RU Vented Flat Door	<b>SR14-DVF</b>
SnapRax 8RU Vented Flat Door	<b>SR8-DVF</b>

## FLUSH MOUNT CURVED DOORS



SnapRax 43RU Solid Curved Door	<b>SR43-DSC</b>
SnapRax 37RU Solid Curved Door	<b>SR37-DSC</b>
SnapRax 29RU Solid Curved Door	<b>SR29-DSC</b>
SnapRax 21RU Solid Curved Door	<b>SR21-DSC</b>
SnapRax 14RU Solid Curved Door	<b>SR14-DSC</b>
SnapRax 8RU Solid Curved Door	<b>SR8-DSC</b>

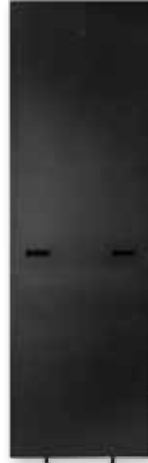
SnapRax 43RU Polycarbonate Curved Door	<b>SR43-DPC</b>
SnapRax 37RU Polycarbonate Curved Door	<b>SR37-DPC</b>
SnapRax 29RU Polycarbonate Curved Door	<b>SR29-DPC</b>
SnapRax 21RU Polycarbonate Curved Door	<b>SR21-DPC</b>
SnapRax 14RU Polycarbonate Curved Door	<b>SR14-DPC</b>
SnapRax 8RU Polycarbonate Curved Door	<b>SR8-DPC</b>

SnapRax 43RU Vented Curved Door	<b>SR43-DVC</b>
SnapRax 37RU Vented Curved Door	<b>SR37-DVC</b>
SnapRax 29RU Vented Curved Door	<b>SR29-DVC</b>
SnapRax 21RU Vented Curved Door	<b>SR21-DVC</b>
SnapRax 14RU Vented Curved Door	<b>SR14-DVC</b>
SnapRax 8RU Vented Curved Door	<b>SR8-DVC</b>

## REAR PANELS



SnapRax 43RU Vented Rear Panel	<b>SR43-RPV</b>
SnapRax 37RU Vented Rear Panel	<b>SR37-RPV</b>
SnapRax 29RU Vented Rear Panel	<b>SR29-RPV</b>
SnapRax 21RU Vented Rear Panel	<b>SR21-RPV</b>
SnapRax 14RU Vented Rear Panel	<b>SR14-RPV</b>
SnapRax 8RU Vented Rear Panel	<b>SR8-RPV</b>



SnapRax 43RU Solid Rear Panel	<b>SR43-RP</b>
SnapRax 37RU Solid Rear Panel	<b>SR37-RP</b>
SnapRax 29RU Solid Rear Panel	<b>SR29-RP</b>
SnapRax 21RU Solid Rear Panel	<b>SR21-RP</b>
SnapRax 14RU Solid Rear Panel	<b>SR14-RP</b>
SnapRax 8RU Solid Rear Panel	<b>SR8-RP</b>

## SIDE PANELS - 26" DEPTH

**SIDE PANELS  
SOLD IN PAIRS**



SnapRax 43RU Side Panels x2 with 26" depth	<b>SR43-26SP</b>
SnapRax 37RU Side Panels x2 with 26" depth	<b>SR37-26SP</b>
SnapRax 29RU Side Panels x2 with 26" depth	<b>SR29-26SP</b>
SnapRax 21RU Side Panels x2 with 26" depth	<b>SR21-26SP</b>
SnapRax 14RU Side Panels x2 with 26" depth	<b>SR14-26SP</b>
SnapRax 8RU Side Panels x2 with 26" depth	<b>SR8-26SP</b>

## SIDE PANELS - 20" DEPTH



**SIDE PANELS ARE AVAILABLE  
FOR ANY HEIGHT OF SNAPRAX  
PROVIDING PROTECTION  
FOR YOUR AV COMPONENTS**



With front trim strip



Without front trim strip

SnapRax 43RU Side Panels x2 with 20" depth	<b>SR43-SP</b>
SnapRax 37RU Side Panels x2 with 20" depth	<b>SR37-SP</b>
SnapRax 29RU Side Panels x2 with 20" depth	<b>SR29-SP</b>
SnapRax 21RU Side Panels x2 with 20" depth	<b>SR21-SP</b>
SnapRax 14RU Side Panels x2 with 20" depth	<b>SR14-SP</b>
SnapRax 8RU Side Panels x2 with 20" depth	<b>SR8-SP</b>

SnapRax 43RU Front Trim Strip	<b>SR43-TS</b>
SnapRax 37RU Front Trim Strip	<b>SR37-TS</b>
SnapRax 29RU Front Trim Strip	<b>SR29-TS</b>
SnapRax 21RU Front Trim Strip	<b>SR21-TS</b>
SnapRax 14RU Front Trim Strip	<b>SR14-TS</b>
SnapRax 8RU Front Trim Strip	<b>SR8-TS</b>



**CABLE RACEWAYS**  
PROVIDE WIRE  
MANAGEMENT FOR  
CLEAN INSTALL



**SPLIT RAIL**  
FOR 26" DEEP  
SNAPRAX  
ONLY



SnapRax 43RU Cable Raceway	<b>SR43-CR</b>
SnapRax 37RU Cable Raceway	<b>SR37-CR</b>
SnapRax 29RU Cable Raceway	<b>SR29-CR</b>
SnapRax 21RU Cable Raceway	<b>SR21-CR</b>
SnapRax 14RU Cable Raceway	<b>SR14-CR</b>
SnapRax 8RU Cable Raceway	<b>SR8-CR</b>

SnapRax 43RU Joining Kit	<b>SR43-JK</b>
SnapRax 37RU Joining Kit	<b>SR37-JK</b>
SnapRax 29RU Joining Kit	<b>SR29-JK</b>
SnapRax 21RU Joining Kit	<b>SR21-JK</b>
SnapRax 14RU Joining Kit	<b>SR14-JK</b>
SnapRax 8RU Joining Kit	<b>SR8-JK</b>

SnapRax 43RU Split Rail	<b>SR43-SR</b>
SnapRax 37RU Split Rail	<b>SR37-SR</b>
SnapRax 29RU Split Rail	<b>SR29-SR</b>
SnapRax 21RU Split Rail	<b>SR21-SR</b>
SnapRax 14RU Split Rail	<b>SR14-SR</b>
SnapRax 8RU Split Rail	<b>SR8-SR</b>



2RU Solid Drawer	<b>SR-DR2</b>
3RU Solid Drawer	<b>SR-DR3</b>
4RU Solid Drawer	<b>SR-DR4</b>



2RU Solid Drawer with Lock	<b>SR-DR2-LK</b>
3RU Solid Drawer with Lock	<b>SR-DR3-LK</b>
4RU Solid Drawer with Lock	<b>SR-DR4-LK</b>



3RU Lock Box	<b>SR-DR3-LK-FH</b>
4RU Lock Box	<b>SR-DR4-LK-FH</b>



2RU Retractable Shelf	<b>SR-SHR2</b>
3RU Retractable Shelf	<b>SR-SHR3</b>



1RU Solid Front Face Shelf	<b>SR-SHS1</b>
2RU Solid Front Face Shelf	<b>SR-SHS2</b>



1RU Vented Shelf	<b>SR-SH1</b>
2RU Vented Shelf	<b>SR-SH2</b>
3RU Vented Shelf	<b>SR-SH3</b>
4RU Vented Shelf	<b>SR-SH4</b>
5RU Vented Shelf	<b>SR-SH5</b>





1RU Vented Blanking Plate **SR-BPHS1**

2RU Vented Blanking Plate **SR-BPHS2**

3RU Vented Blanking Plate **SR-BPHS3**

4RU Vented Blanking Plate **SR-BPHS4**



1RU Solid Blanking Plate **SR-BPS1**

2RU Solid Blanking Plate **SR-BPS2**

3RU Solid Blanking Plate **SR-BPS3**

4RU Solid Blanking Plate **SR-BPS4**



1RU Vented Shelf w/ Hold Down Bracket **SR-SH1-KB**

2RU Vented Shelf w/ Hold Down Bracket **SR-SH2-KB**

3RU Vented Shelf w/ Hold Down Bracket **SR-SH3-KB**

4RU Vented Shelf w/ Hold Down Bracket **SR-SH4-KB**

5RU Vented Shelf w/ Hold Down Bracket **SR-SH5-KB**

Solid Blanking Panels serve both form and function, filling out empty rack space and directing air where needed. Vented Blanking Panels allow heat produced by AV components to dissipate while covering any blank space between components.



4RU CD Holder **SR-CD4**



5RU DVD Holder **SR-DVD5**



**12 OUTLETS**  
48" LENGTH  
VERTICAL

**6 OUTLETS**  
17" LENGTH  
HORIZONTAL

Vertical Power Strip  
115v/15-amp, 12 outlets **UA-VPDU**

Horizontal Power Strip  
115v/15-amp, 6 outlets **UA-HPDU**

**ALL FANS**  
ULTRA QUIET



FAN STACK W/ FRONT EXHAUST	# OF FANS	DEPTH	FAN DIA.	CFM	DB/FAN	PART #
1RU Fan Stack w/ Exhaust - 2 Ultra Quiet Fans and 8" depth	2	8"	4.75"	120	27	<b>SR-FS1-S8</b>
1RU Fan Stack w/ Exhaust - 2 Ultra Quiet Fans and 14" depth	2	14"	4.75"	120	27	<b>SR-FS1-S14</b>



FAN PANEL - ULTRA QUIET	# OF FANS	RACK HEIGHT	FAN DIA.	CFM	DB/FAN	PART #
2RU Fan Plate w/ 2 Ultra Quiet Fans	2	2RU	3"	50	28	<b>SR-QF2-2</b>
2RU Fan Plate w/ 4 Ultra Quiet Fans	4	2RU	3"	100	28	<b>SR-QF2-4</b>
3RU Fan Plate w/ 2 Ultra Quiet Fans	2	3RU	4.75"	120	27	<b>SR-QF3-2</b>



FAN PANEL W/ DISPLAY	# OF FANS	RACK HEIGHT	FAN DIA.	CFM	DB/FAN	PART #
2RU Ultra Quiet Fan Plate w/ 2 Ultra Quiet Fans and Display	2	2RU	3"	50	28	<b>SR-QFD2-2</b>
2RU Fan Plate w/ 4 Ultra Quiet Fans and Display	4	2RU	3"	100	28	<b>SR-QFD2-4</b>
3RU Fan Plate w/ 2 Ultra Quiet Fans and Display	2	3RU	4.75"	120	27	<b>SR-QFD3-2</b>

## RACKS: SNAPRAX SERIES ACCESSORIES



ALL LACING BARS AVAILABLE IN PACKS OF 5



Lacing Bar Round | **SR-LBR2**



Lacing Bar "C" Style | **SR-LB2  
SR-LB4  
SR-LB6**



Lacing Bar Straight Style | **SR-LB3**



Lacing Bar Tabbed Straight Style | **SR-LB**

TABBED STRAIGHT LACING BAR  
FOR 26" DEEP SNAPRAX ONLY



Flat Trim Kit



Curved Trim Kit

SnapRax Flat Trim Kit | **SR-TF**

SnapRax Curved Trim Kit | **SR-TC**



No Trim Kit



Flat Trim Kit



Curved Trim Kit



# CHECK OUT OUR FULL LINE OF FIXED, TILT AND ARTICULATING DISPLAY MOUNTS!



# NEED CAT CABLES?

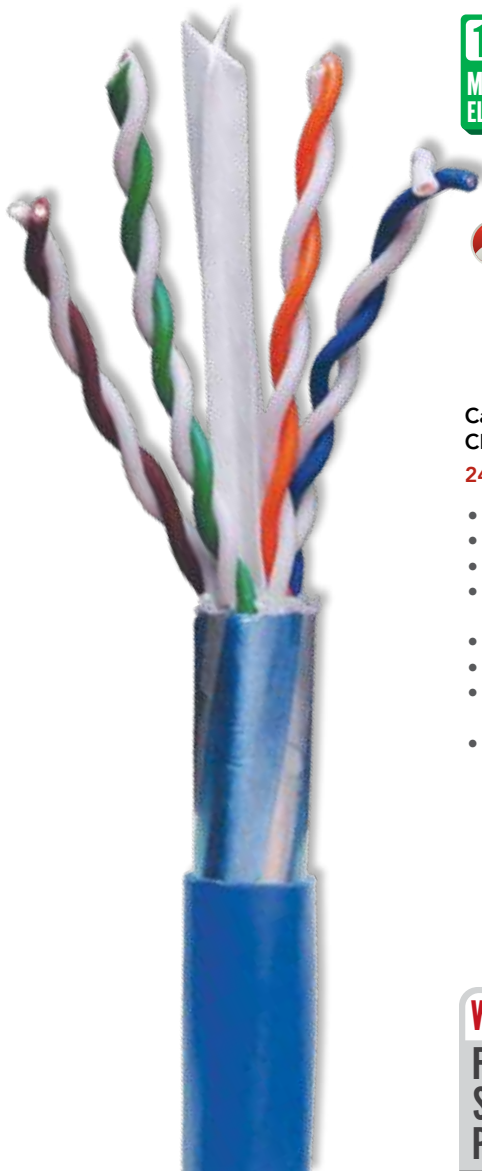


**DIGITAL NETWORKS CONTINUE TO REQUIRE MORE & MORE BANDWIDTH.  
WIRE FOR THE FUTURE WITH LIBERTY'S CAT CABLE SOLUTIONS!**

## The CAT6 Mosaic Crossblock® Twisted Pair

Presenting Liberty's premiere Category Cable offering. Category 6a is the newest TIA/EIA-568-B.2-10 cable.

The Mosaic Crossblock® is a thin tape made up of individual metallic blocks separated by an insulating layer. Since there is no metal-to-metal contact, there is no path for current to flow longitudinally, and thus, no need for grounding.



**10 GB SPEED**  
MOSAIC CROSSBLOCK®  
ELIMINATES CROSS TALK



**PERFECT FOR**  
• HOME NETWORKING  
• VIDEO DISTRIBUTION  
• STREAMING  
• VIDEO CONFERENCING  
• DATA CENTERS

**Category 6A Enhanced  
CMR CAT5 Riser**

**24-4P-MTP**

- CMR/CMP rated
- Tested & certified to 500 MHz
- TIA/EIA-568-B.2-10
- Supports 10 Gigabit ethernet on a 90m run
- Sequential footmarks
- 10/100 BaseT Network compliant
- Future-ready for high speed data transfers
- Jacket color options available

**WWW.LIBAV.COM**  
**FOR COMPLETE  
SPECS ON ALL  
PRODUCTS**



**PERFECT FOR**  
• HOME NETWORKING  
• VIDEO DISTRIBUTION  
• STREAMING  
• VIDEO CONFERENCING

**Category 6A Enhanced**

**24-4P-L6ASH**

**10  
GB**

- CMR/CMP rated
- Tested to 5000 MHz
- TIA/EIA-568-B.2-10
- Supports 10 Gigabit ethernet on a 90m run
- Sequential footmarks
- 10/100 BaseT Network compliant
- Jacket color options available



**PERFECT FOR  
BASIC NETWORKING**

**Category 6E Enhanced  
CMR CAT5 Riser**

**24-4P-L6-EN**

**550  
MHz**

- CMR/CMP rated
- Tested to 550 MHz
- 16dB Headroom over CAT5
- Sequential footmarks
- 10/1000 BaseT Network compliant
- Jacket color options available



**PERFECT FOR  
BASIC PHONE SERVICE**

**Category 5E Enhanced  
CMR CAT5 Riser**

**24-4P-LS-EN**

**350  
MHz**

- CMR/CMP rated
- Tested to 350 MHz
- 16dB Headroom over CAT5
- Sequential footmarks
- 10/100 BaseT Network compliant
- Jacket color options available



# PANELCRAFTERS® CUSTOM FACE PLATES

- Create custom rack panels and headers precisely manufactured by our computerized milling center
- Engrave, screen print or combine both options with your message, logo and text
- Enhance graphic appeal with labels and overlays
- Panels can include connectors, modules, LED displays, control cutouts, membrane switches, touch screens and more
- Hinge rack panels from side or bottom



PANELCRAFTERS

 **Liberty**  
AV SOLUTIONS

### Custom Rack Panels

PanelCrafters® rack panels are perfect for corporate board rooms, medical facilities, home theater systems, control systems or anywhere you want specific connectivity for your installation. Combine several standard rack panels into one larger panel for a clean custom appearance to your project.



Call to Order

Add engraving and screen printing options to customize your connectivity and brand your work. Used in a broad base of commercial and residential applications, PanelCrafters® rack panels add a professional finish, brand your company and provide easy connectivity that improves your profitability on every job.

### Standard Rack Panels

- Stocked panels are black anodized aluminum
- 1/8" flat cut in 1 RU through 9 RU
- 1/16" flanged cut in 1 RU through 4 RU
- Larger sizes available by special order
- Custom colors available by special order
- See website to view our full selection

### Hinged Rack Panels

- Hinges can be mounted on side or bottom for easy access
- Easy access to back of panel makes terminations and trouble shooting a breeze
- 90-degree rack stops optional
- Saves time and labor in the field



Call to Order



Call to Order

### Broadcast Plates & Panels

- PanelCrafters® is a trusted resource for large scale broadcast installations, stadiums and gymnasiums across the country
- Consultants depend on PanelCrafters® quality connectors and support in creating complex requirements
- Incorporate pre-wired, tinned and terminated solutions to save time and labor



**WWW.LIBAV.COM**

**FOR OUR FULL LINE  
OF CUSTOM & STANDARD  
PLATES & PANELS**



## Gaming Solutions Incorporated Into Your Network

- Panels and plates that connect most gaming consoles to other devices
- Provides connectivity to commercial & residential networks



PC-GC1R-P



PC-GC1R-W

## RackMate® Header Panels and Dome Labels

Custom RackMate® header panels show the quality and service you provide and give your installation a professional finishing touch.

These permanent calling cards make it easy to contact you for future projects and upgrades. From a single rack unit up to 24" x 30", PanelCrafters® can create a custom header panel that brands your project with your company logo and contact information.

### Custom RackMate® Header

- 1 color on black polycarbonate
- 1 rack unit size
- Screen printing or digital printing available
- .010" polycarbonate



Call to Order

### RackMate® Image Series

- Full color, full panel printing
- 1 rack unit size
- Screen printing or digital printing available
- .010" polycarbonate



Screen or Digitally Printed | RHIM

### RackMate® Classic Series

- Brushed Aluminum or Black Anodized aluminum rack header
- 1 color printing or engraving
- 1 rack unit size



Brushed Aluminum | RHCC



Black Anodized | RHCB

## Custom Dome Labels

- Easy branding for racks or other installations
- Provides contact information on smaller systems that don't require a rack
- Tag and brand your equipment
- Great for demo equipment
- Standard sizes include:  
0.75" x 1.50" and 1.25" x 2.25" ovals
- Custom sizes and shapes available.



### DEVICE FACEPLATES

GIVE YOUR RACK A FINISHED, HIGH-END LOOK WITH DEVICE FACEPLATES.

SEND US THE DEVICE NAMES AND MODEL NUMBERS YOU WANT FITTED AND RECEIVE A CUSTOM CUT FACEPLATE!

**Need a custom quote? Call today! 800.530.8998**



# NEED HDMI CABLES?



**LIBERTY AV SOLUTIONS OFFERS A WIDE VARIETY OF HDMI CABLES FOR EVERY INSTALLATION NEED!**

**TERMINATE ME!**



Liberty's revolutionary new Terminatable HDMI cable is perfect for creating custom lengths! It is also a great solution for pulling bulk cable through walls and small openings.



## Terminatable HDMI® High Speed Cable

**DL-HDMCPK**

- HDMI Field Termination
- Outstanding for pulling through a small openings and terminating
- Customize your lengths to dress that rack or minimize excess cable
- Locking HDMI connector technology increases retention up to 400%
- Supports HDMI with Ethernet, CEC and Bi-directional Audio formats
- Resolution support depending on length, add the (P/N for the extender) to ensure long length signal



**TERMINATE IN 5 MINUTES!**



Watch it at [www.LibAV.com](http://www.LibAV.com)!



## HDMI® High Speed Cable with Ethernet

**E-HDSEM-M**

- CL2 / FT4 Flame rating for in-wall installations
  - Gold plated contacts
  - ATC Certified to 10.2 Gbps / 4K x 2K
  - Verified to 5.0 Gbps/1080p60 with internal test equipment
  - Supports CEC, Audio Return Channel (ARC), Ethernet
- Lengths: 0.5m, 1m, 1.5m, 2m, 3m, 4m, 5m, 6m, 8m, 10m, 12m, 15m, 20m



## HDMI® High Speed Cable

**E-HDSM-M**

- CMR/CMP rated
  - Tested to 550 MHz
  - 16dB Headroom over CAT5
  - Sequential footmarks
  - 10/1000 BaseT Network compliant
- Lengths: 0.5m, 1m, 1.5m, 2m, 3m, 4m, 5m, 6m, 8m, 10m



## HDMI® Standard Speed Cable

**E-HDM-M**

- ATC certified
  - 2.25 Gbps Data rate and tested to 4.85 Gbps
  - Supports 720p/1080i/1080p24 & all audio formats
  - Audio Return Channel (ARC)
- Lengths: 0.5m, 1m, 1.5m, 2m, 3m, 4m, 5m, 6m, 8m, 10m, 12m, 15m, 20m



## Digitalinx® HDMI® High Speed Interconnect Patch Cable

**DLX-HDSM**

- ATC certified
  - 10.2 Gbps Data rate
  - Supports up to 4K x 2K resolution & all audio formats
  - Send HDMI 1080p hundreds of feet over common coax
  - Reliable and Flexible
- Lengths: 1m, 2m & 3m

SPECIFICATIONS SUBJECT TO CHANGE

# TRIPP LITE POWER PROTECTION & DISTRIBUTION

- Pure Sine Wave Series generate perfect power, providing the highest level of protection and support for audio/video components
- Automatic Voltage Regulation Series regulates power by adjusting input power, raising low voltage and lowering high voltage to provide clean power output to components
- Isobar Power Conditioning Series eliminates line noise interference between connected components by using Exclusive Isolated Filter Banks
- Power Distribution Units are IP addressable for remote access, control and diagnostics, giving the integrator the ability to individually reboot products remotely



## Uninterrupted Power Supply (UPS)

**Application:** Supply perfect power to all components (control systems, high-definition sources, studios, Audio/Video editing suites, houses of worship, digital consoles, DVD/music/PCs/servers, RAIDs, media centers, PVRs/DVRs (TiVo®), board rooms, automation control, digital processors/EFX, racks, micro-display projectors, VoIP and security equipment).

**Features:** Pure Sine Wave series generate perfect power along with battery backup. Quiet fans and larger internal engines provide more headroom. Supports components through blackouts and power anomalies. Premium power conditioning blocks damaging surges and filters disruptive EMI/RFI line noise.



1000VA/800W Pure Sine Wave UPS System

### HTR10-2U

- First-class quality output for the best component performance
- IP remote access, control and diagnostics capability with email notification (built-in accessory slot, SNMPWEBCARD available separately)
- 6 outlets (2 banks of outlets can be individually controlled via software to reboot locked components or prolong runtime)
- USB and DB9 serial ports and FREE software included (for system power monitoring and automatic shutdown)
- 1-line tel/Ethernet surge protection (for phone/PVR/network line)
- Extended runtime capability with optional external battery packs
- 2U rack console
- 10-ft. cord

### BP48V24-2U

- 48V external battery pack (Not expandable). 2U rackmount or tower. BLUE 2-point connector.

### BP48V60RT-3U

- 48V external battery pack (Expandable). 3U rackmount or tower. BLUE 2-point connector.



1500VA/1200W Pure Sine Wave UPS System

### HTR15-2U

- The best quality output for the best component performance
- IP remote access, control and diagnostics capability with email notification (built-in accessory slot, SNMPWEBCARD available separately)
- 6 outlets (2 banks of outlets can be individually controlled via software to reboot locked components or prolong runtime)
- USB and DB9 serial ports and FREE software included (for system power monitoring and automatic shutdown)
- 1-line tel/ethernet surge protection (for phone/PVR/network line)
- Extended runtime capability with optional external battery packs
- 2U rack console
- 10-ft. cord

### BP48V24-2U

- 48V external battery pack (Not expandable). 2U rackmount or tower. BLUE 2-point connector.

### BP48V60RT-3U

- 48V external battery pack (Expandable). 3U rackmount or tower. BLUE 2-point connector.



2200VA/1600W Pure Sine Wave UPS System

### HTR22-3U

- The best quality output for the best component performance
- IP remote access, control and diagnostics capability with email notification (built-in accessory slot, SNMPWEBCARD available separately)
- 9 outlets (2 banks of outlets can be individually controlled via software to reboot locked components or prolong runtime)
- DB9 serial port and FREE software included (for system power monitoring and automatic shutdown)
- Extended runtime capability with optional external battery packs
- 3U rack console
- 6-ft. cord

### BP72V15-2U

- 72V external battery pack (Not expandable). 2U rackmount or tower. BLACK 3-point connector

### BP72V28RT-3U

- 72V external battery pack (Expandable). 3U rackmount or tower. BLACK 3-point connector.

**BEST QUALITY  
PURE SINE**

## Pure Sine Wave UPS Systems

Tripp Lite's Pure Sine Wave UPS Series generates perfect power, providing the highest level of protection and support for audio/video components. True on-line, double-conversion operation with zero transfer time to battery takes incoming AC power and remakes it into perfect output power with a pure sine wave. Constant on-line operation completely isolates connected components from power problems. Pure sine wave output delivers the highest quality power to help components perform at their peak. Drivers written for Crestron & AMX.

## Systems Automatic Voltage Regulation (AVR) Series (UPS)

Tripp Lite's Automatic Voltage Regulation (AVR) UPS Systems regulate clean power. Automatic voltage regulation adjusts input power, raising low voltage and lowering high voltage to supply clean power output to components. AVR UPS Systems regulate power without relying on their batteries, keeping battery backup reserved for when it's needed during blackouts or extreme power swings.

Perfect for control systems, high-definition sources, DVD/music servers, media center PCs/servers, PVRs/DVRs, home automation, digital consoles/ audio & video editing, digital processors/EFX, racks, micro-display projectors, VoIP and security equipment.



1000VA/500W Automatic Voltage Regulation (AVR) UPS System

### \*HT1000UPS

- LCD rotates and has a dimmer switch
- Displays real-time input voltage and operating conditions
- 8 outlets (4 UPS/surge and 4 surge-only) accommodate all components, even those not requiring battery backup
- Widely spaced outlets accept transformers
- 2-line gold HD coaxial surge protection (for HD sources, satellite/cable and antenna lines)
- User-replaceable battery (Model: RBC51)
- 1-line tel/modem surge protection (for phone/PVR line)
- USB port and FREE software (web download) for automatic Media Center or server shutdown
- 6-ft. cord



1500VA/900W Automatic Voltage Regulation (AVR) UPS System

### HTRL15UPS

- LCD rotates and has a dimmer switch
- Displays real-time input voltage and operating conditions
- 8 UPS/surge outlets accommodate all components
- Widely spaced outlets accept transformers
- 3-line gold HD coaxial surge protection (for HD sources, satellite/cable and antenna lines)
- 1-line tel/modem surge protection (for phone/PVR line)
- USB and DB9 serial ports and FREE software (web download) for automatic Media Center or server shutdown
- 2U rackmount ears included
- 15-ft. cord



500VA/300W Intelligent Automatic Voltage Regulation (AVR) UPS System

### \*HTR05-1U

750VA/450W Intelligent Automatic Voltage Regulation (AVR) UPS System

### HTR07-1U

- AVR UPS systems with IP remote access
- Control and diagnostics capability with email notification (built-in accessory slot, SNMPWEBCARD available separately)
- USB and DB9 serial ports and FREE included software for system power monitoring and automatic shutdown
- 1U rackmount ears included
- Drivers written for Crestron & AMX
- USB port and FREE software (web download) for automatic Media Center or server shutdown.
- HTR05-1U: 7 outlets (1 individually controlled via software, 1 surge only)
- 10-ft. cord

\*HT1000UPS and HTR05-1U use AVR to correct low voltage and battery power to correct high voltage.

**PERFECT FOR  
CONTROL SYSTEMS**





## Power Conditioning Centers

**Application:** Provide vital protection and audio/video performance enhancement for all components in audio/video systems, home automation security applications and VoIP. Passes and protects PLC systems.

**Features:** Exclusive Isolated Filter Banks eliminate line noise interference between connected components. Premium power conditioning blocks damaging surges and filters disruptive EMI/RFI line noise. Up to \$150,000 Ultimate Lifetime Insurance covers connected equipment against surge damage for life.



8-Outlet Professional Audio/Video Power Conditioning Center with Isobar® Technology

### AV3500PC

- Professional Power Conditioning Center
- 2 IR-controllable outlets
- Input voltage LCD meter displays incoming utility power with dimmer control and diagnostic LEDs
- 5700 joules surge/spike protection
- 3-line 2.2 GHz HD coax, 1-line tel w/splitter surge protection
- Full equipment depth for more installation options, ease of rear access
- 1U rackmount ears included
- 10-ft. cord with right-angle plug



12-Outlet Professional Audio/Video Power Conditioning Center with Isobar® Technology

### HT7300PC

- Professional Power Conditioning Center
- 4 IR-controllable outlets
- 3 Isobar EMI/RFI filtering banks
- 5700 joules surge/spike protection
- 3-line 2.2 GHz HD coax, 1-line Ethernet and 1-line tel w/splitter surge protection
- 2 LCD meters monitor input voltage and current usage
- 2U rackmount ears included
- 10-ft. cord with right-angle plug
- Includes remote control

## Power Distribution Units

**Application:** Distribute, monitor and manage power in audio/video environments.

**Features:** IP-addressable models provide remote access, control & diagnostics, giving the integrator the ability to individually reboot products remotely.

Avoid overloading circuits and remotely monitor load conditions. The programmable sequential power outlets help prevent inrush-related equipment interaction on start-up. Saving those expensive truck rolls, it's your final back door to the system! Wide selection of 15A to 30A PDUs available including Basic, Switched, Metered and Monitored. PDUs support a variety of mounting options including 1U-2U horizontal or 0U vertical installations.



IP-Addressable, Metered PDU with Built-In Automatic Transfer Switch

### PDUMH15ATNET

- 8 IP-individually controlled outlets, 2 x 12-ft. cords, 15A, 1U rackmount

IP-Addressable, Metered PDU

### PDUMV15NET

- 16 IP-individually controlled outlets, 15A, 0U vertical mounting

IP-Addressable, Metered PDU

### PDUMV20NET

- 24 IP-individually controlled outlets, 20A, 0U vertical mounting

Metered PDU

### PDUMV15

- 16 outlets, 15-ft cord, 15A, 0U vertical mounting

Metered PDU

### PDUV15

- 12 outlets, 15-ft cord, 15A, 0U vertical mounting



## NOTES

---

---

---

---

---

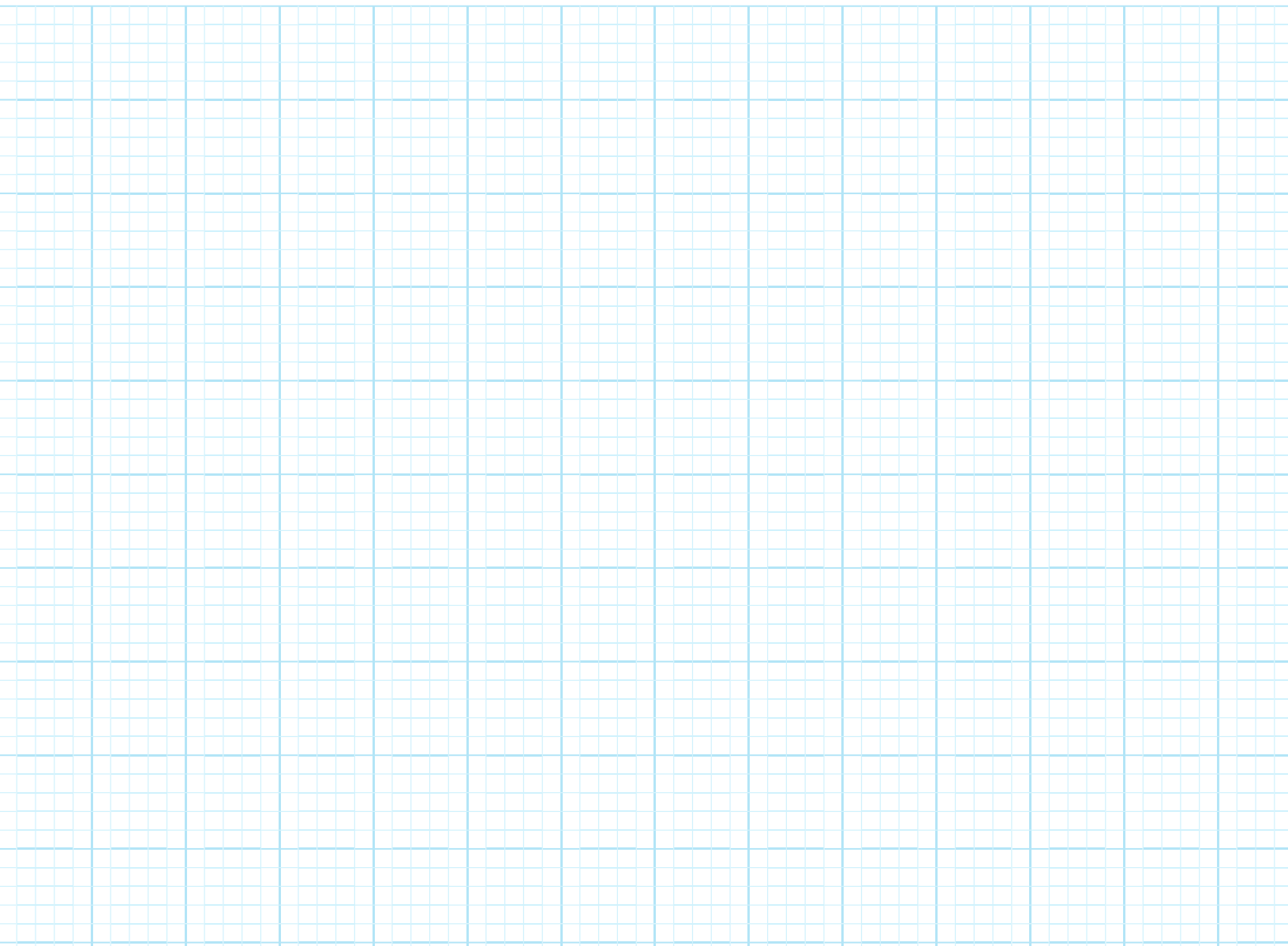
---

---

---

---

---





## RACKS & ACCESSORIES FROM LIBERTY AV SOLUTIONS

Liberty continually strives to offer you the best AV products at the right price, and give you an easy one-stop place to get everything you need for your installation. Our Racks & Accessories tie in seamlessly with installing devices and cable runs where organization and a clean install are a must. Our Rack products have been designed specifically for the AV professional, Installer's Choice utilizes nearly 7 decades of excellence in design and production. Liberty can even supply you with power management solutions, custom & standard headers and of course all the wire & cable you need!

Improve your profitability from source to display with Liberty AV Solutions!

**Headquarters:**

11675 Ridgeline Drive  
Colorado Springs, CO  
80921 USA

Phone: 719.260.0061  
Toll-Free: 800-530-8998  
Intl: +1.719.388.7542  
Fax: 719.260.0075

**East Coast Operations:**

5521 Lakeview Rd. Suite W  
Charlotte, North Carolina  
28269 USA

Phone: 704-393-3339  
Toll-Free: 800-323-2040  
Intl: +1.719.388.7542  
Fax: 704.393.7334

**Phoenix Operations:**

4219 East Broadway Rd. #102  
Phoenix, AZ  
85040 USA

Phone: 602-438-7100  
Toll-Free: 800-263-6591  
Intl: +1.719.388.7542  
Fax: 602.437.1182

1.800.530.8998 | [www.LibAV.com](http://www.LibAV.com) | +1.719.388.7542