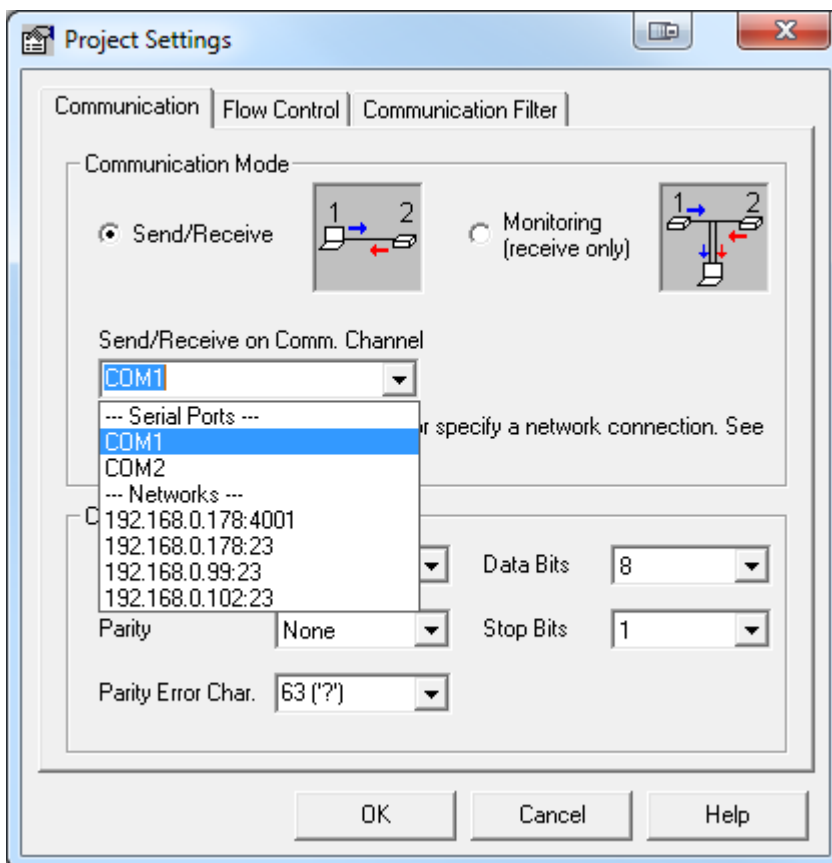
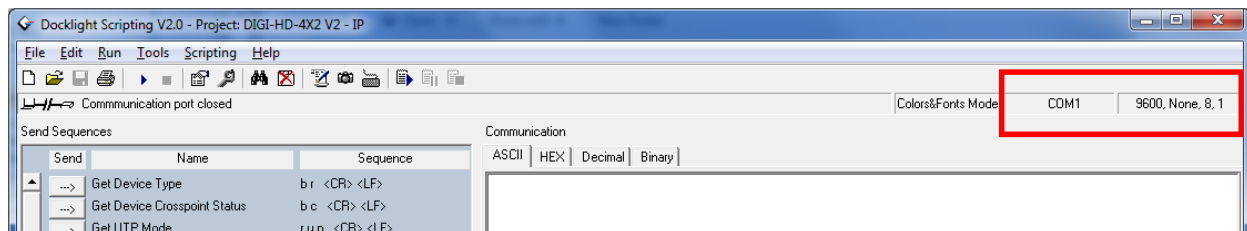


Docklight Setup Guide

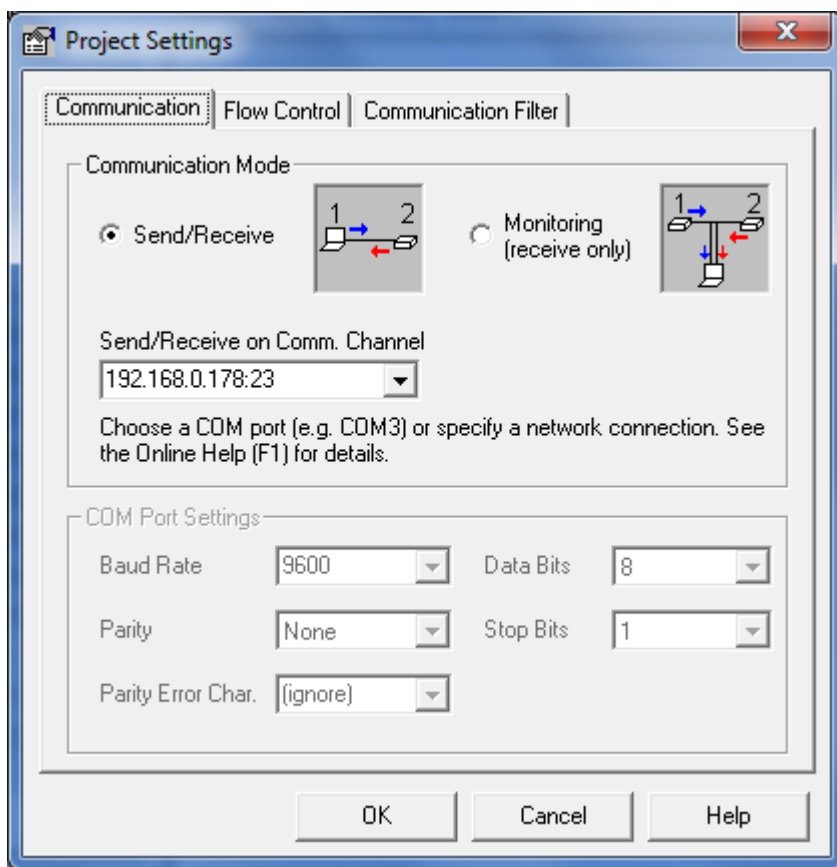
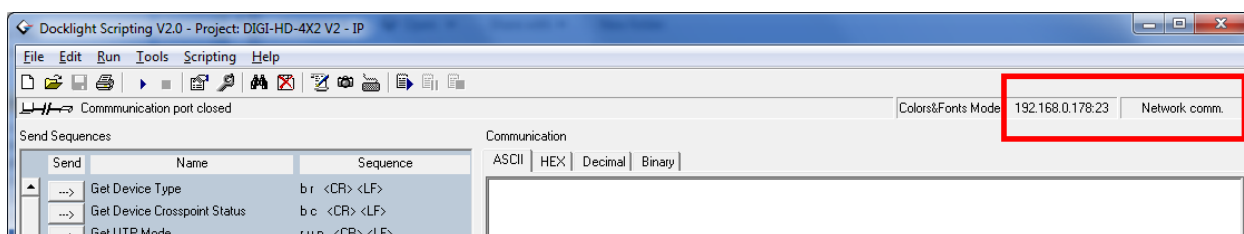
RS232

The *RS232.ptp* file has all of the RS232 commands associated with this product. You will need to download Docklight Scripting from http://www.docklight.de/download_en.htm. When you open the ptp file, you can set the RS232 port for your computer at the top right of the window by double clicking on *COM1*. From the Send/Receive on Comm. Channel dropdown box, you can select an available COM port.



IP

The *IP.ptp* file has all of the IP commands associated with this product. You will need to download Docklight Scripting from http://www.docklight.de/download_en.htm. When you open the ptp file, you can set the IP address for the matrix at the top right of the window by double clicking on *Network comm.* Manually enter the IP address of the device. To designate a specific port, add a colon (:) and the port number after the IP address.



Once connected to the matrix, you will be able to set AV routes by clicking the arrow buttons on the left side of the Docklight window.